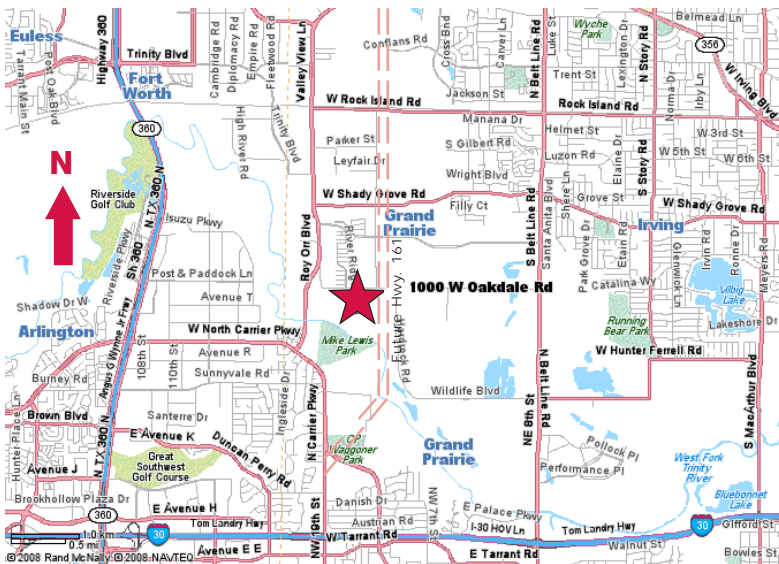


# For Sale

1000 & 1113 W. Oakdale Road  
Grand Prairie, Texas  
± 22.29 Acres of Land



- Zoned Light Industrial / Planned Development
- Future Highway 161 Frontage



#### contact information:

**Michael Stanzel**  
NAI Robert Lynn  
direct 214 256 7122  
fax 214 256 7101  
email [mstanzel@robertlynn.com](mailto:mstanzel@robertlynn.com)

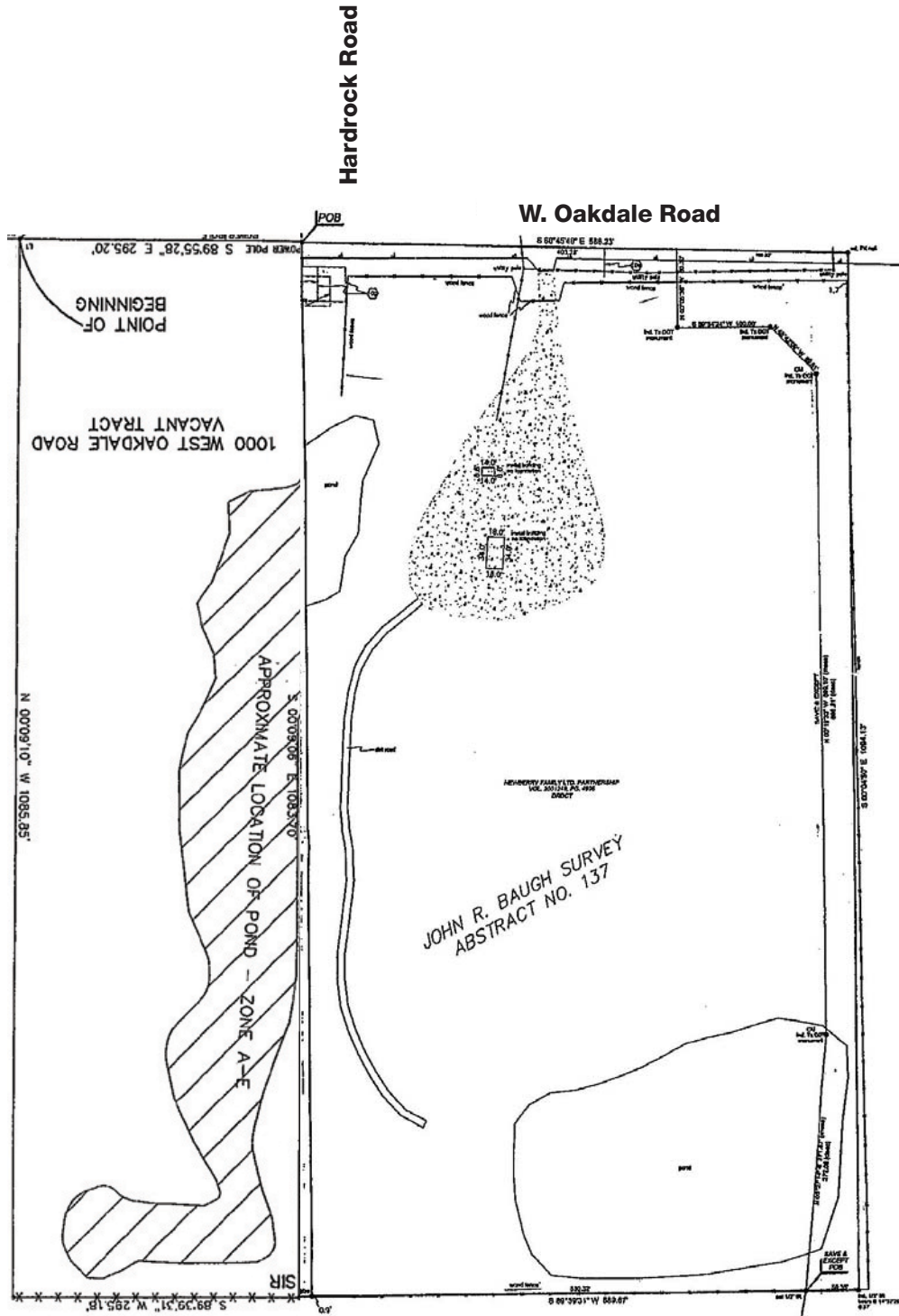
**Matt Elliott**  
NAI Robert Lynn  
direct 214 256 7161  
fax 214 256 7101  
email [melliott@robertlynn.com](mailto:melliott@robertlynn.com)



Commercial Real Estate Services, Worldwide.

# For Sale

1000 & 1113 W. Oakdale Road  
Grand Prairie, Texas  
± 22.29 Acres of Land



Hardrock Road  
Future Highway 161