

# For Lease

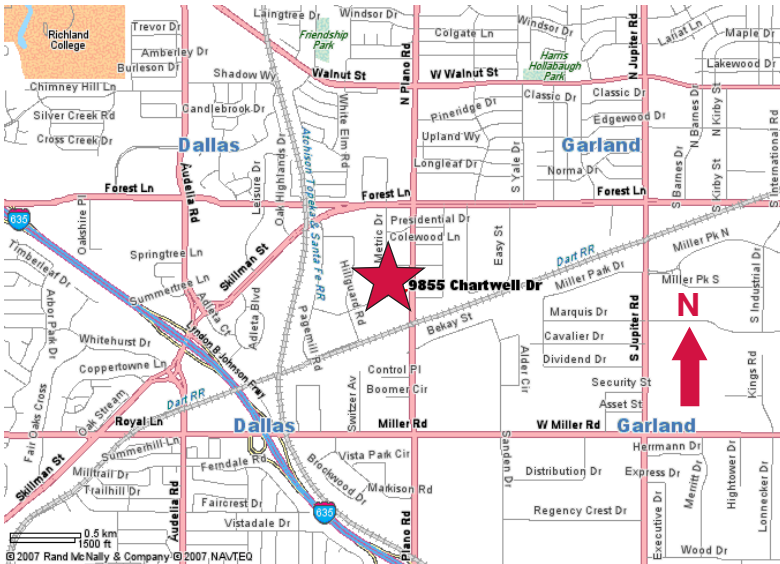
9855 Chartwell Drive

Dallas, Texas

Up to 18,017 Square Feet



- ± 10,677 SF Office
- ± 16' Clear Height
- 5 Grade Level Doors
- All Air-Conditioned
- Heavy Power
- Divisible to 3,348 SF



Commercial Real Estate Services, Worldwide.

contact information:

**Stephen Cooper**

NAI Robert Lynn

direct 214 256 7160

fax 214 256 7101

email [scooper@robertlynn.com](mailto:scooper@robertlynn.com)

**John Lancaster**

NAI Robert Lynn

direct 214 256 7162

fax 214 256 7101

email [jlancaster@robertlynn.com](mailto:jlancaster@robertlynn.com)

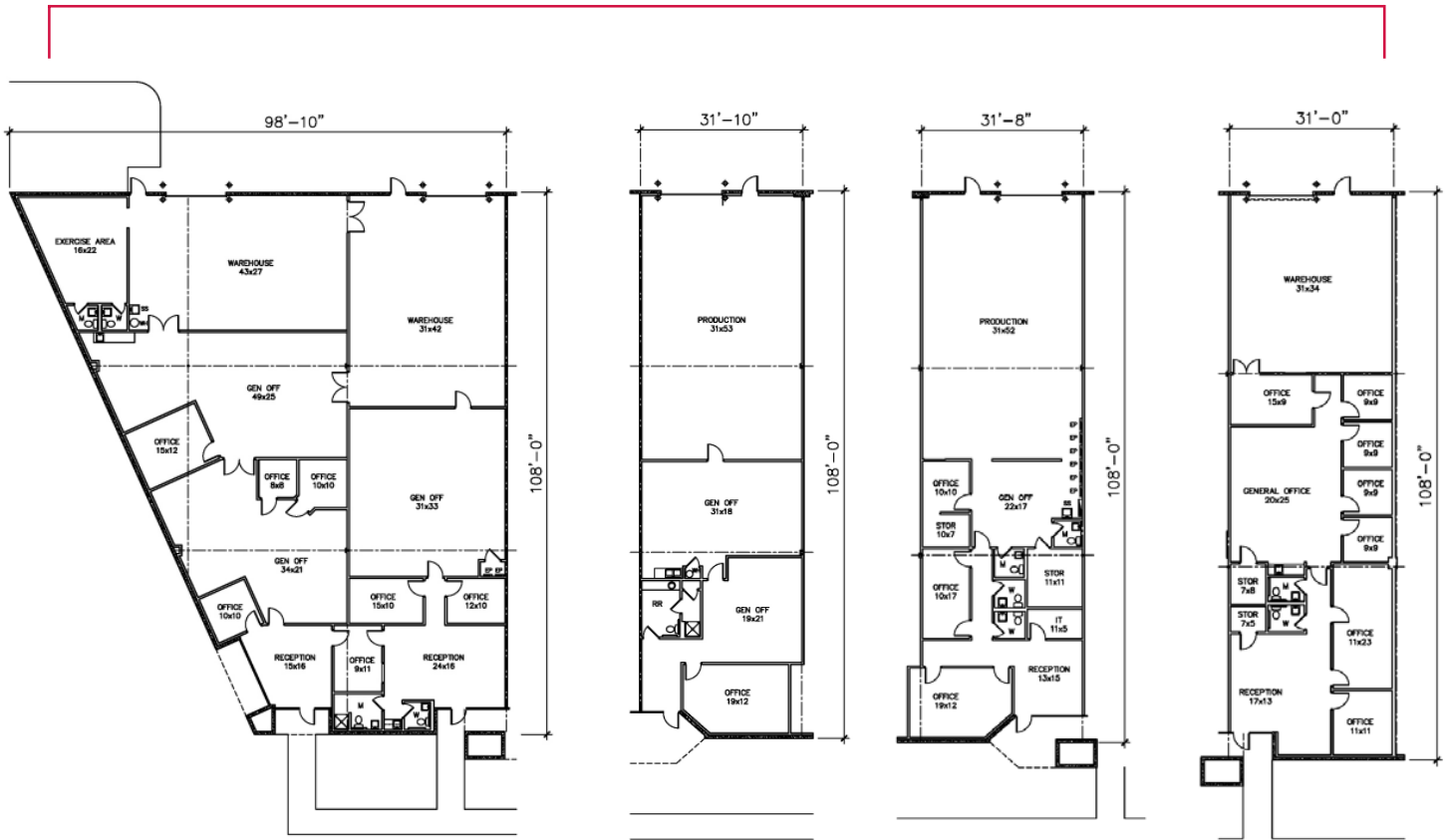
# For Lease

9855 Chartwell Drive

Dallas, Texas

Up to 18,017 Square Feet

18,017 SF



## Suite A

- 7,811 SF
- 4,780 SF Office
- 2 Grade Level Doors

## Suite B

- 3,400 SF
- 1,757 SF Office
- 1 Grade Level Door

## Suite C

- 3,458 SF
- 1,846 SF Office
- 1 Grade Level Door

## Suite D

- 3,348 SF
- 2,294 SF Office
- 1 Grade Level Door

### contact information:

**Stephen Cooper**

NAI Robert Lynn

direct 214 256 7160

fax 214 256 7101

email [scooper@robertlynn.com](mailto:scooper@robertlynn.com)

**NAI Robert Lynn**  
Commercial Real Estate Services, Worldwide.

Individual Memberships  
SOCIETY OF  
INDUSTRIAL AND  
OFFICE REALTORS®

**John Lancaster**

NAI Robert Lynn

direct 214 256 7162

fax 214 256 7101

email [jlancaster@robertlynn.com](mailto:jlancaster@robertlynn.com)