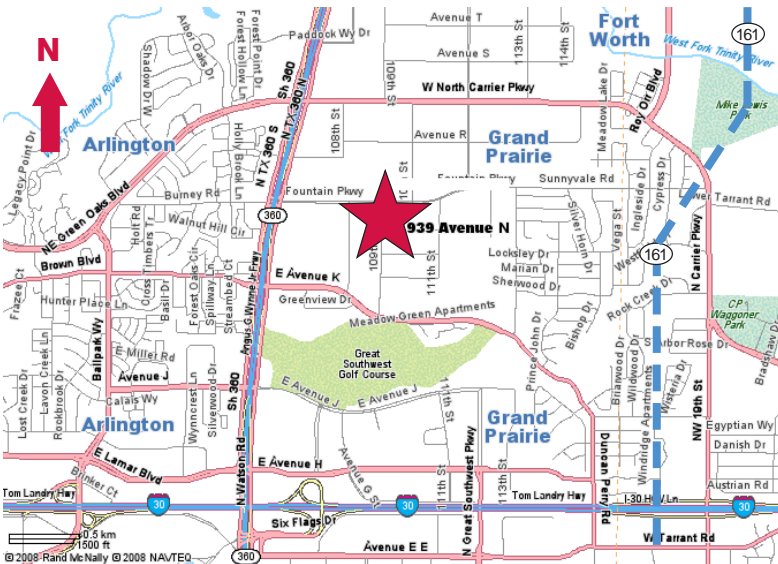


For Lease

941-B Avenue N
Grand Prairie, Texas
15,000 Square Feet



- ± 879 SF Office
- ± 16' Clear Height
- 2 Dock High Doors (1 Ramped)
- Sprinklered
- Exhaust Fan
- Ample Car Parks
- Easy Access to Hwy. 360



Owned By:



NAI Robert Lynn

Commercial Real Estate Services, Worldwide.

contact information:

Michael A. Stanzel, SIOR

NAI Robert Lynn

direct 214 256 7122

fax 214 256 7101

email mstanzel@robertlynn.com

For Lease

941-B Avenue N
Grand Prairie, Texas
15,000 Square Feet

