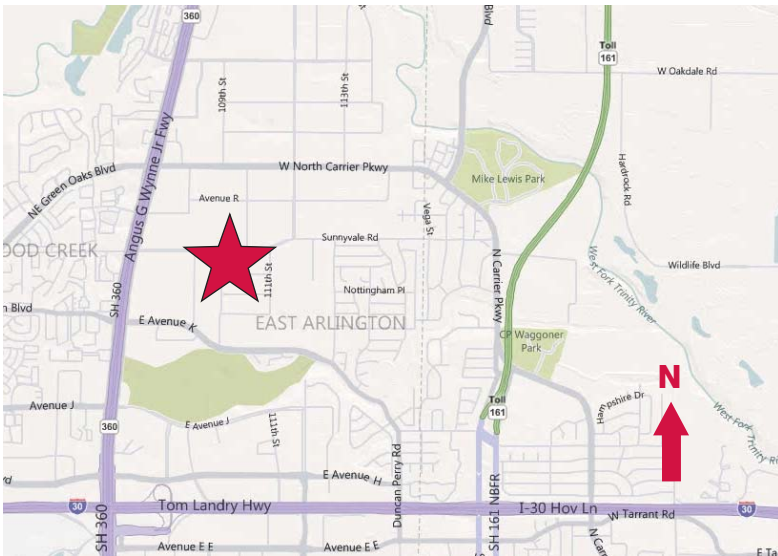


# For Lease

923-B Avenue N  
Grand Prairie, Texas  
10,000 Square Feet



- ± 302 SF Office
- ± 16' Clear Height
- 3 Dock High Doors (1 Ramp)
- Air-Conditioned Warehouse
- Sprinklered
- Ample Car Parks
- Easy Access to Hwy. 360

Owned By:



**NAI** Robert Lynn

Commercial Real Estate Services, Worldwide.

**contact information:**

Michael A. Stanzel, SIOR

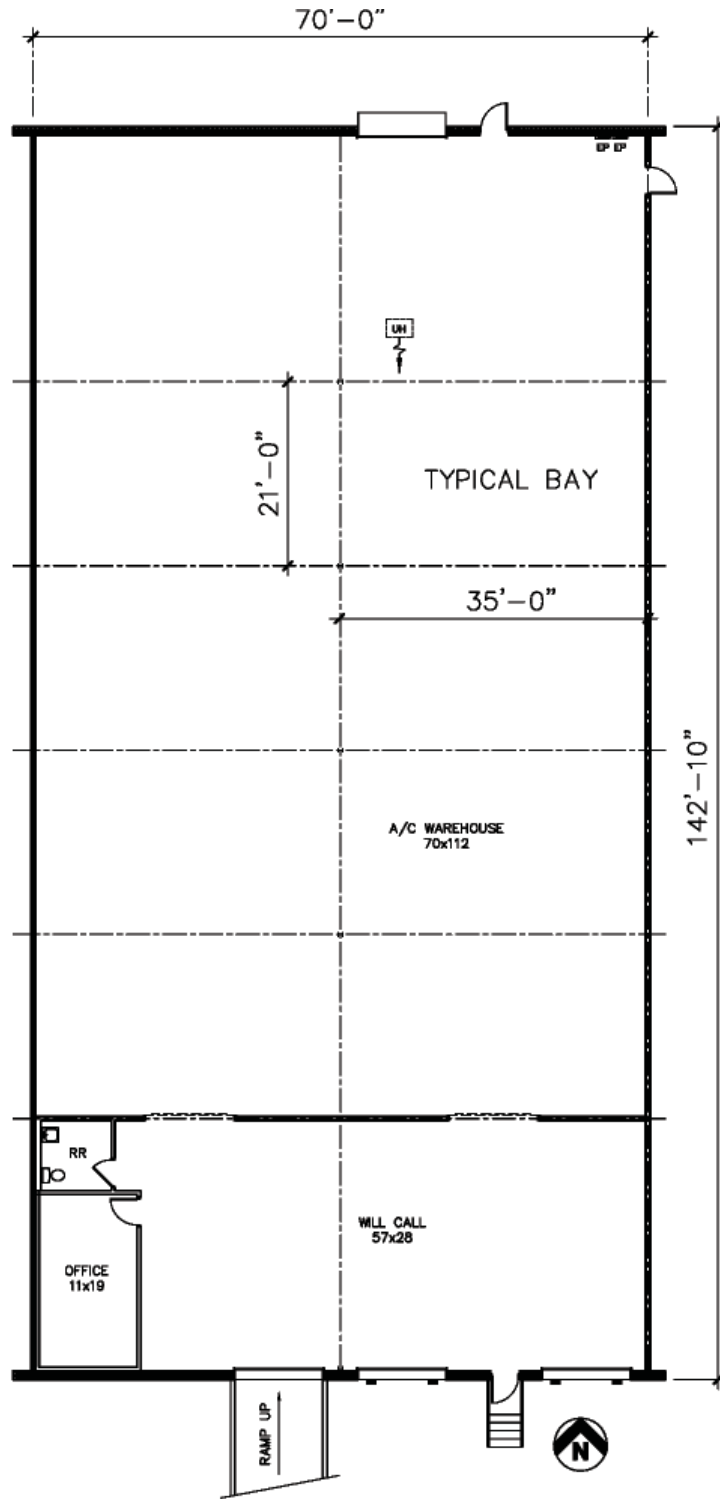
NAI Robert Lynn

direct 214 256 7122

fax 214 256 7101

email [mstanzel@robertlynn.com](mailto:mstanzel@robertlynn.com)

**For Lease**  
923-B Avenue N  
Grand Prairie, Texas  
10,000 Square Feet



**NAI Robert Lynn**  
Commercial Real Estate Services, Worldwide.

The information contained herein has been given to us by the owner of the property or other sources we deem reliable. We have no reason to doubt its accuracy, but we do not guarantee it. All information should be verified prior to purchase or lease.

Individual Memberships  
SOCIETY OF  
INDUSTRIAL AND  
OFFICE REALTORS®