

FOR LEASE 3,600 SF



→ OVERVIEW

7468 Dogwood Park is located in Midway Business Park

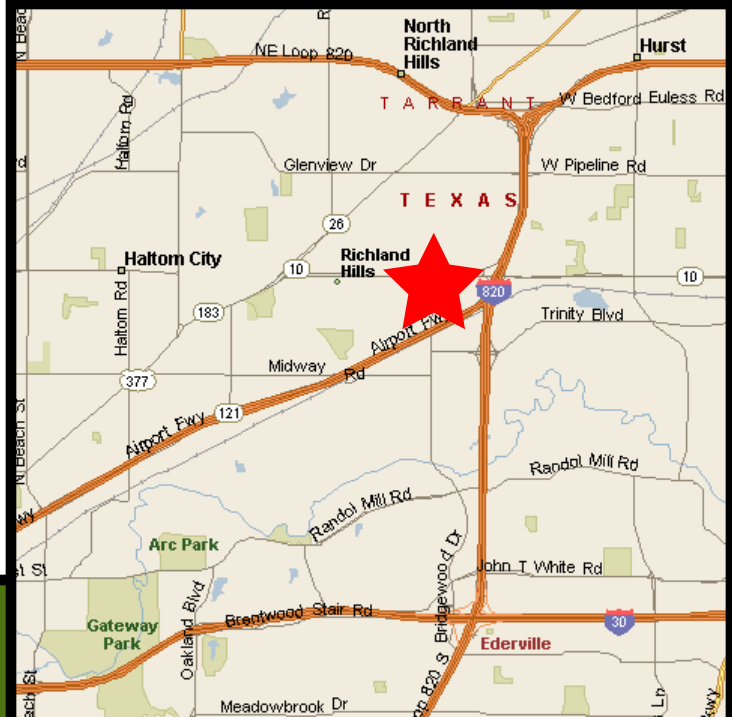
-- Available 7/1/10

-- Prime location, right off Highway 121, with access to Loop 820, and I-35W

→ PROPERTY STATISTICS

Available SF	3,600 square feet
Office Area	3,060 square feet
Number of Docks	2 grade level doors
Parking Facilities	Abundant parking
Clear Height	13' clear
Location	Convenient access to SH-183, I-35W, Loop 820, and DFW Airport

7468 Dogwood Park Richland Hills, TX



www.firstindustrial.com

FIRST INDUSTRIAL REALTY TRUST

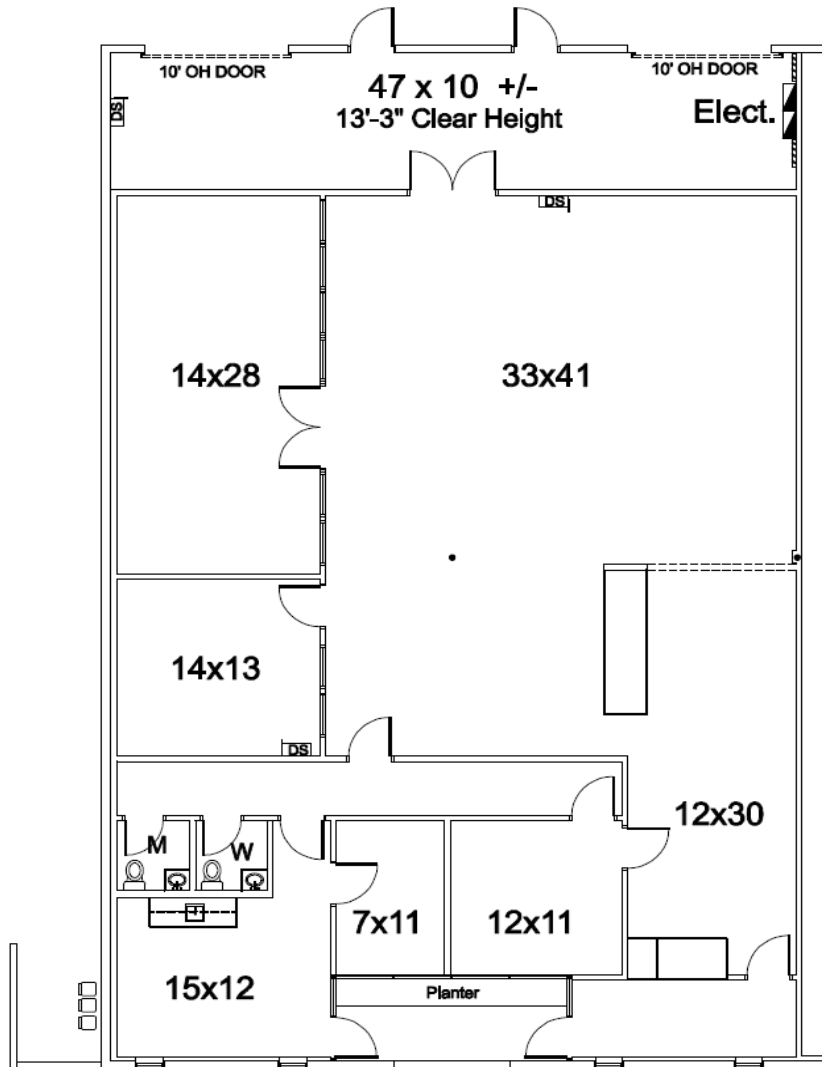
4505 Excel Parkway Suite 600 Addison, TX 75001

T: (972) 386-4700 F: (972) 386-4540 www.firstindustrial.com



7468 Dogwood Park
Richland Hills, TX

FOR LEASE 3,600 SF



3,600 S.F. Total / 3,060 S.F. Office

→ CONTACT

our exclusive agent:

NAI Robert Lynn
Commercial Real Estate Services, Worldwide.

Todd Hubbard, SIOR

Executive Vice President
(817) 885-8333, Ext. 112
thubbard@robertlynn.com

Michael Newsome

Associate
(817) 885-8333, Ext. 165
mnewsome@robertlynn.com

NAI Robert Lynn

4851 LBJ Freeway
Suite 1000
Dallas, TX 75244
(214) 256-7100

All information furnished regarding the property for sale, rental or financing is obtained from sources deemed reliable. No representation is made to the accuracy thereof and is submitted subject to errors, omissions, change of price rental or other conditions, prior sale, lease, or financing, or withdrawal without notice. First Industrial Realty Trust, Inc. represents the Seller in this transaction and as such owes all duties and obligations thereto.

FIRST INDUSTRIAL REALTY TRUST

4505 Excel Parkway Suite 600 Addison, TX 75001
T: (972) 386-4700 F: (972) 386-4540 www.firstindustrial.com

