

# FOR LEASE 8,000 SF

## → OVERVIEW

7437 Tower Street is located in Midway Business Park

-- Divisible to 4,000 SF

-- Prime location, right off Highway 121, with access to Loop 820, and I-35W



## → PROPERTY STATISTICS

**Available SF** 8,000 square feet

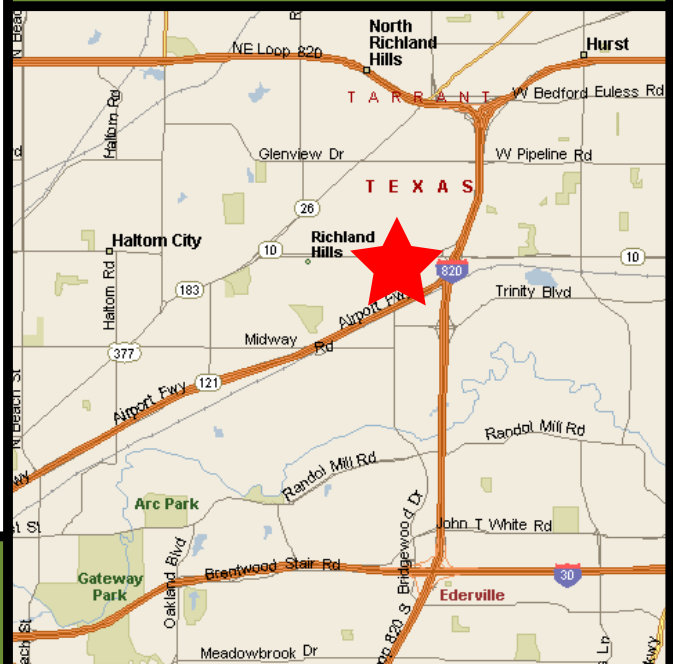
**Office Area** 1,703 square feet

**Number of Docks** 2 dock high  
1 ramp

**Clear Height** 16' clear

**Building** Fenced outside storage

## 7437 Tower Street Richland Hills, TX



[www.firstindustrial.com](http://www.firstindustrial.com)

### FIRST INDUSTRIAL REALTY TRUST

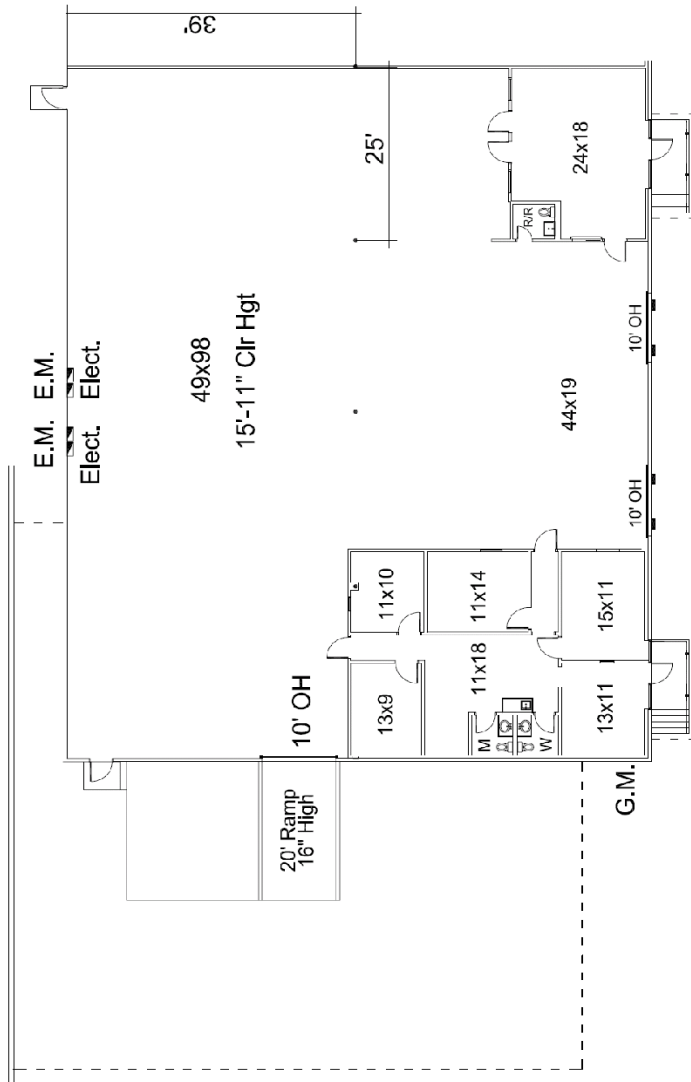
4505 Excel Parkway Suite 600 Addison, TX 75001

T: (972) 386-4700 F: (972) 386-4540 [www.firstindustrial.com](http://www.firstindustrial.com)



7437 Tower Street  
Richland Hills, TX

FOR LEASE 8,000 SF



8,000 S.F. TOTAL / 1,703 S.F. OFFICE AREA

→ CONTACT

our exclusive agent:

**NAI Robert Lynn**  
Commercial Real Estate Services, Worldwide.

**Todd Hubbard, SIOR**

President, Fort Worth  
(817) 885-8333  
thubbard@robertlynn.com

**Michael Newsome**

Market Director  
(817) 885-8333  
mnewsome@robertlynn.com

**NAI Robert Lynn**

301 Commerce Street  
Suite 2360  
Fort Worth, TX 76102  
(817) 885-8333

All information furnished regarding the property for sale, rental or financing is obtained from sources deemed reliable. No representation is made to the accuracy thereof and is submitted subject to errors, omissions, change of price rental or other conditions, prior sale, lease, or financing, or withdrawal without notice. First Industrial Realty Trust, Inc. represents the Seller in this transaction and as such owes all duties and obligations thereto.

**FIRST INDUSTRIAL REALTY TRUST**

4505 Excel Parkway Suite 600 Addison, TX 75001  
T: (972) 386-4700 F: (972) 386-4540 www.firstindustrial.com

