

FOR LEASE 19,780 SF



→ OVERVIEW

7426 Tower Street is located in Midway Business Park

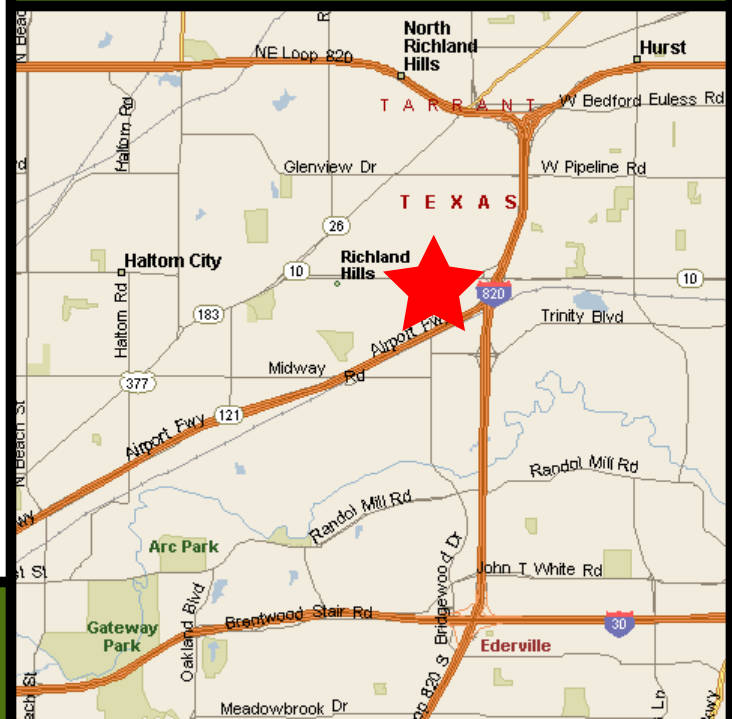
-- Available 2/1/10

-- Prime location, right off Highway 121, with access to Loop 820, and I-35W

→ PROPERTY STATISTICS

Available SF	19,780 square feet
Office Area	6,242 square feet
Number of Docks	4 dock high
Clear Height	18' clear
Power	1200 Amps, 120/240 Volts, 3 (Delta)

7429 Tower Street Richland Hills, TX



www.firstindustrial.com

FIRST INDUSTRIAL REALTY TRUST

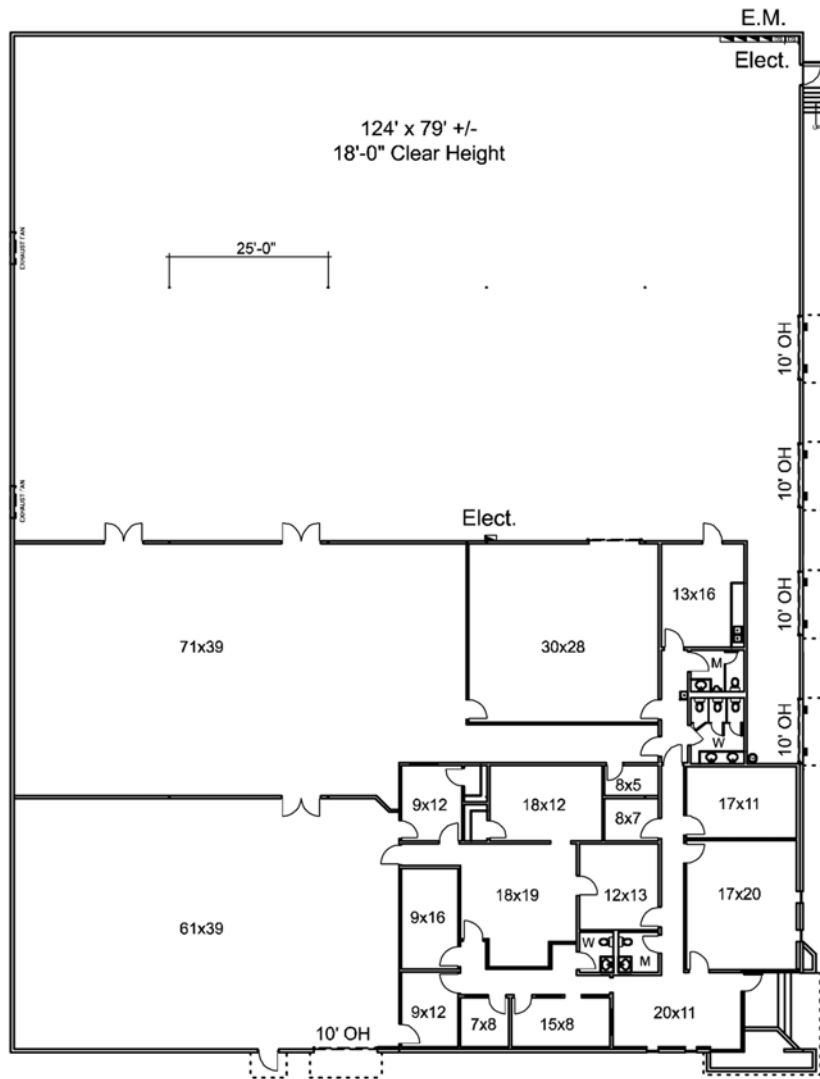
4505 Excel Parkway Suite 600 Addison, TX 75001

T: (972) 386-4700 F: (972) 386-4540 www.firstindustrial.com



7426 Tower Street
Richland Hills, TX

FOR LEASE 19,780 SF



→ CONTACT

our exclusive agent:

NAI Robert Lynn
Commercial Real Estate Services, Worldwide.

Todd Hubbard, SIOR
Executive Vice President
(817) 885-8333, Ext. 112
thubbard@robertlynn.com

Michael Newsome
Associate
(817) 885-8333, Ext. 165
mnewsome@robertlynn.com

NAI Robert Lynn
4851 LBJ Freeway
Suite 1000
Dallas, TX 75244
(214) 256-7100

All information furnished regarding the property for sale, rental or financing is obtained from sources deemed reliable. No representation is made to the accuracy thereof and is submitted subject to errors, omissions, change of price rental or other conditions, prior sale, lease, or financing, or withdrawal without notice. First Industrial Realty Trust, Inc. represents the Seller in this transaction and as such owes all duties and obligations thereto.

FIRST INDUSTRIAL REALTY TRUST
4505 Excel Parkway Suite 600 Addison, TX 75001
T: (972) 386-4700 F: (972) 386-4540 www.firstindustrial.com

