

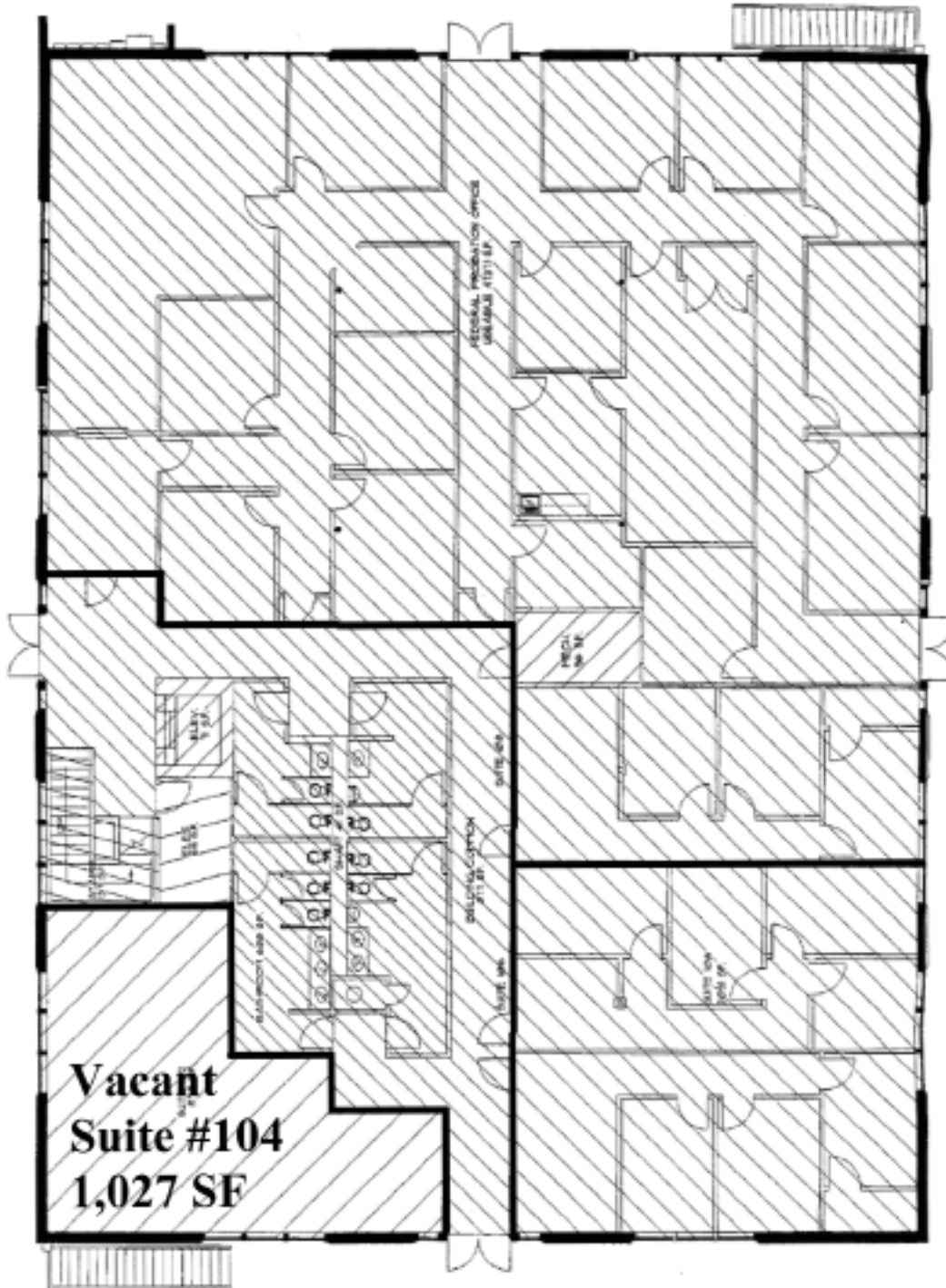




# For Lease

7220-7222 S. Westmoreland Road  
Dallas, Texas  
878 - 9,976 Square Feet Available

## 7220 Westmoreland – 1st Floor



**NAI Robert Lynn**

Commercial Real Estate Services, Worldwide.

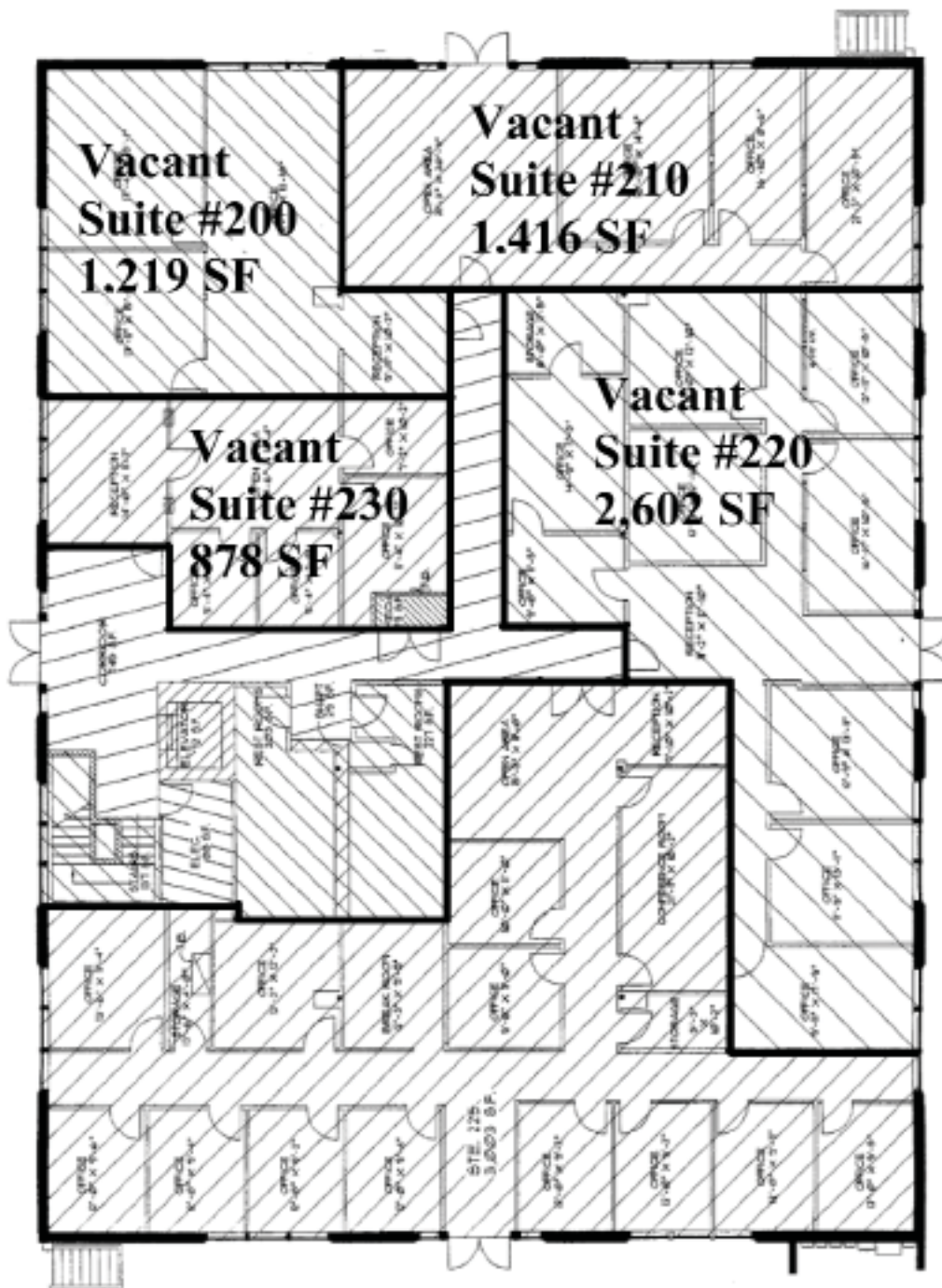
The information contained herein has been given to us by the owner of the property or other sources we deem reliable. We have no reason to doubt its accuracy, but we do not guarantee it. All information should be verified prior to purchase or

Individual Memberships  
**SIOR** SOCIETY OF  
INDUSTRIAL AND  
OFFICE REALTORS®

# For Lease

7220-7222 S. Westmoreland Road  
Dallas, Texas  
878 - 9,976 Square Feet Available

## 7220 Westmoreland - 2<sup>nd</sup> Floor



**NAI Robert Lynn**

Commercial Real Estate Services, Worldwide.

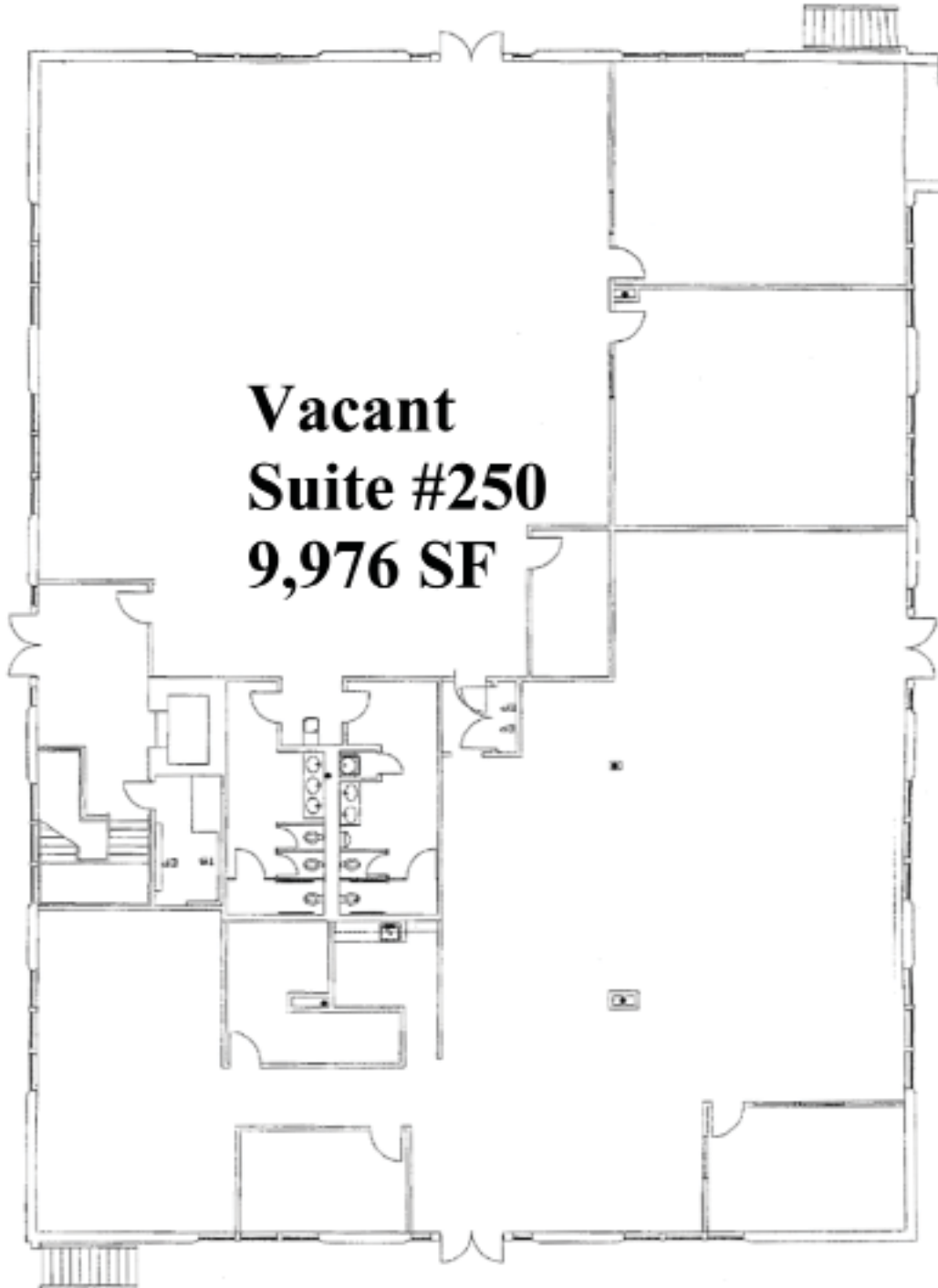
The information contained herein has been given to us by the owner of the property or other sources we deem reliable. We have no reason to doubt its accuracy, but we do not guarantee it. All information should be verified prior to purchase or

Individual Memberships  
SOCIETY OF  
INDUSTRIAL AND  
OFFICE REALTORS

# For Lease

7220-7222 S. Westmoreland Road  
Dallas, Texas  
878 - 9,976 Square Feet Available

## 7222 Westmoreland - 2<sup>nd</sup> Floor



**NAI Robert Lynn**

Commercial Real Estate Services, Worldwide.

The information contained herein has been given to us by the owner of the property or other sources we deem reliable. We have no reason to doubt its accuracy, but we do not guarantee it. All information should be verified prior to purchase or

Individual Memberships  
SOCIETY OF  
INDUSTRIAL AND  
OFFICE REALTORS®