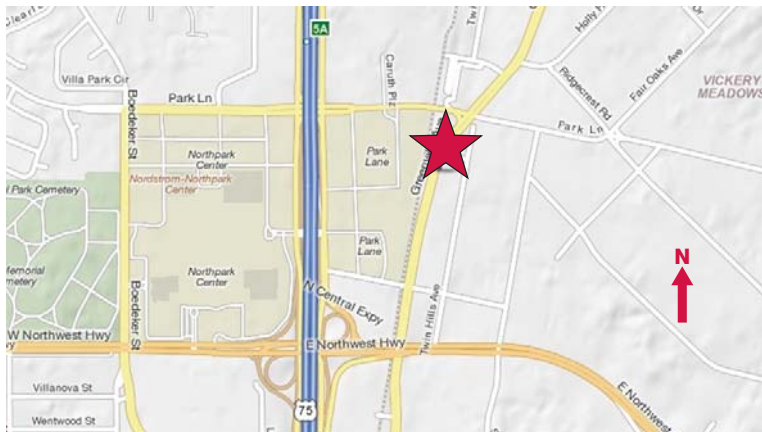




LEASE

6846-6848 Greenville Avenue
Dallas, Texas 75231
7,798 Square Foot Shopping Center

- Three Suites Available
6846 Greenville #100 - 2,351 SF
6846 Greenville #200 - 2,180 SF
6848 Greenville - 3,267 SF
- Ample Parking
- Large Street Sign With Excellent Visibility on Greenville Avenue
- Close Proximity to NorthPark Center & SMU
- Located Near Park Lane DART Rail Station



NAI Robert Lynn

Commercial Real Estate Services, Worldwide.

4851 LBJ Freeway Suite 1000 Dallas Texas 75244 Tel 214 256 7100 www.robertlynn.com

contact information

Tom Heraty

NAI Robert Lynn

direct 214 256 7175

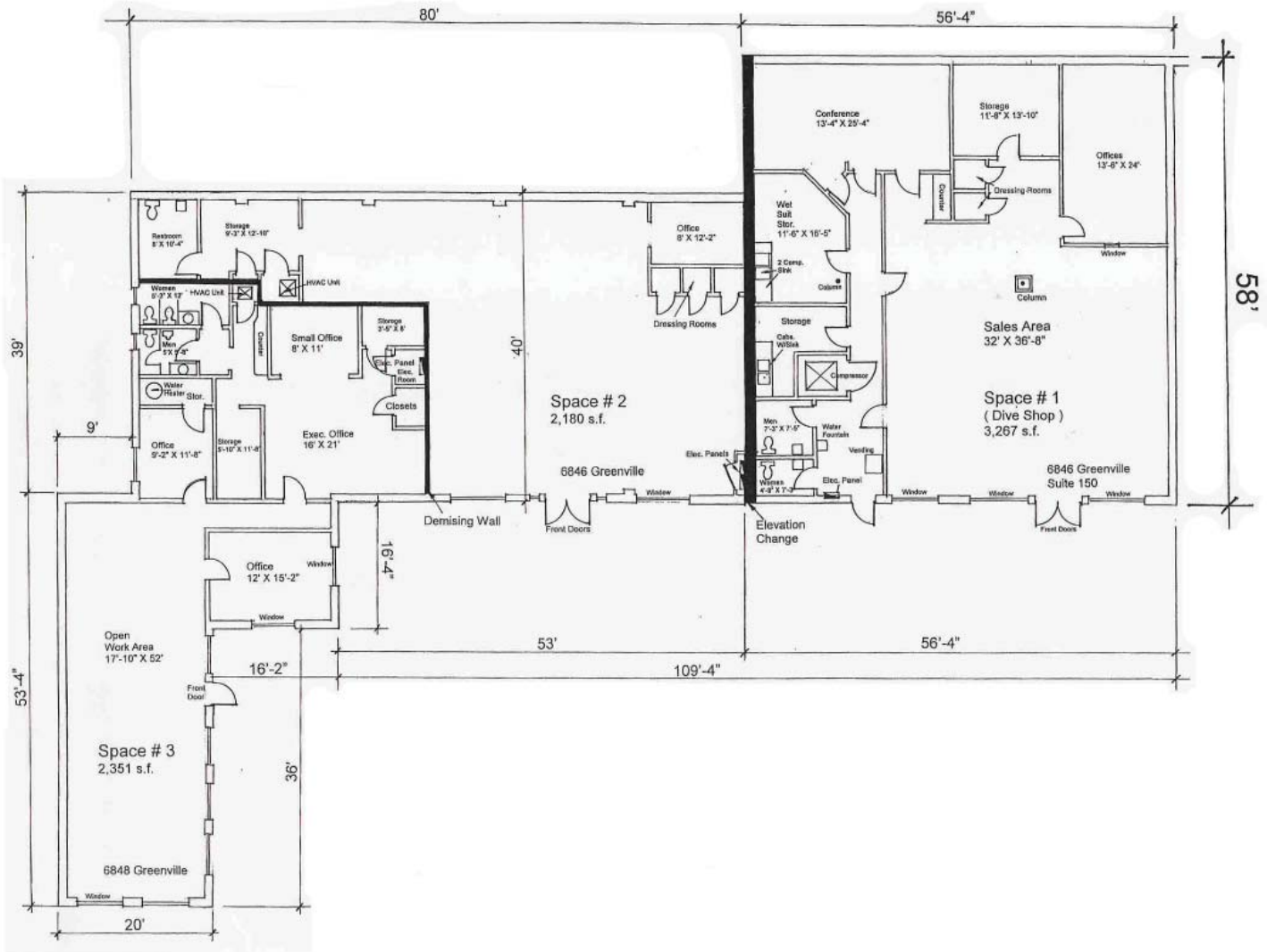
fax 214 256 7101

email theraty@robertlynn.com

6846-6848 Greenville Avenue

Dallas, Texas 75231

7,798 Square Foot Shopping Center



NAI Robert Lynn

Commercial Real Estate Services, Worldwide.

The information contained herein has been given to us by the owner of the property or other sources we deem reliable. We have no reason to doubt its accuracy, but we do not guarantee it. All information should be verified prior to purchase or lease.

SIOR Individual Memberships
SOCIETY OF
INDUSTRIAL AND
OFFICE REALTORS®