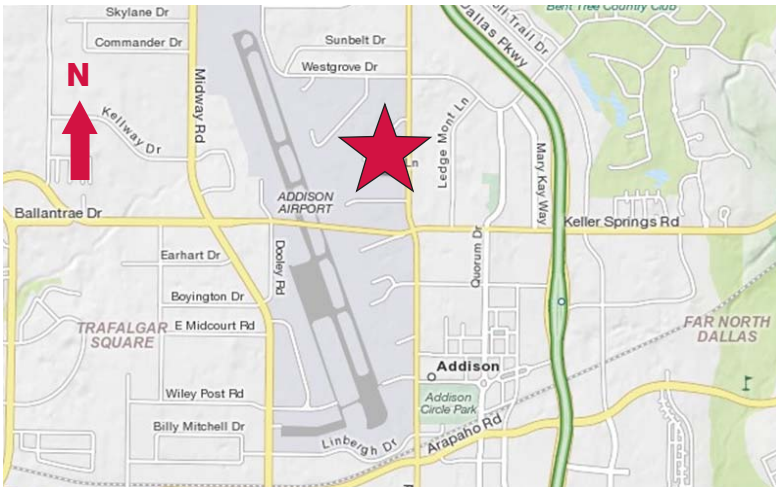


For Lease

4501-A Ratliff Lane
Addison, Texas
21,600 Square Feet



- ± 3,000 SF Office
- ± 14' Eave Height
- 2 Dock High Doors
- 1 Grade Level Door (14' x 12')



NAI Robert Lynn

Commercial Real Estate Services, Worldwide.

contact information:

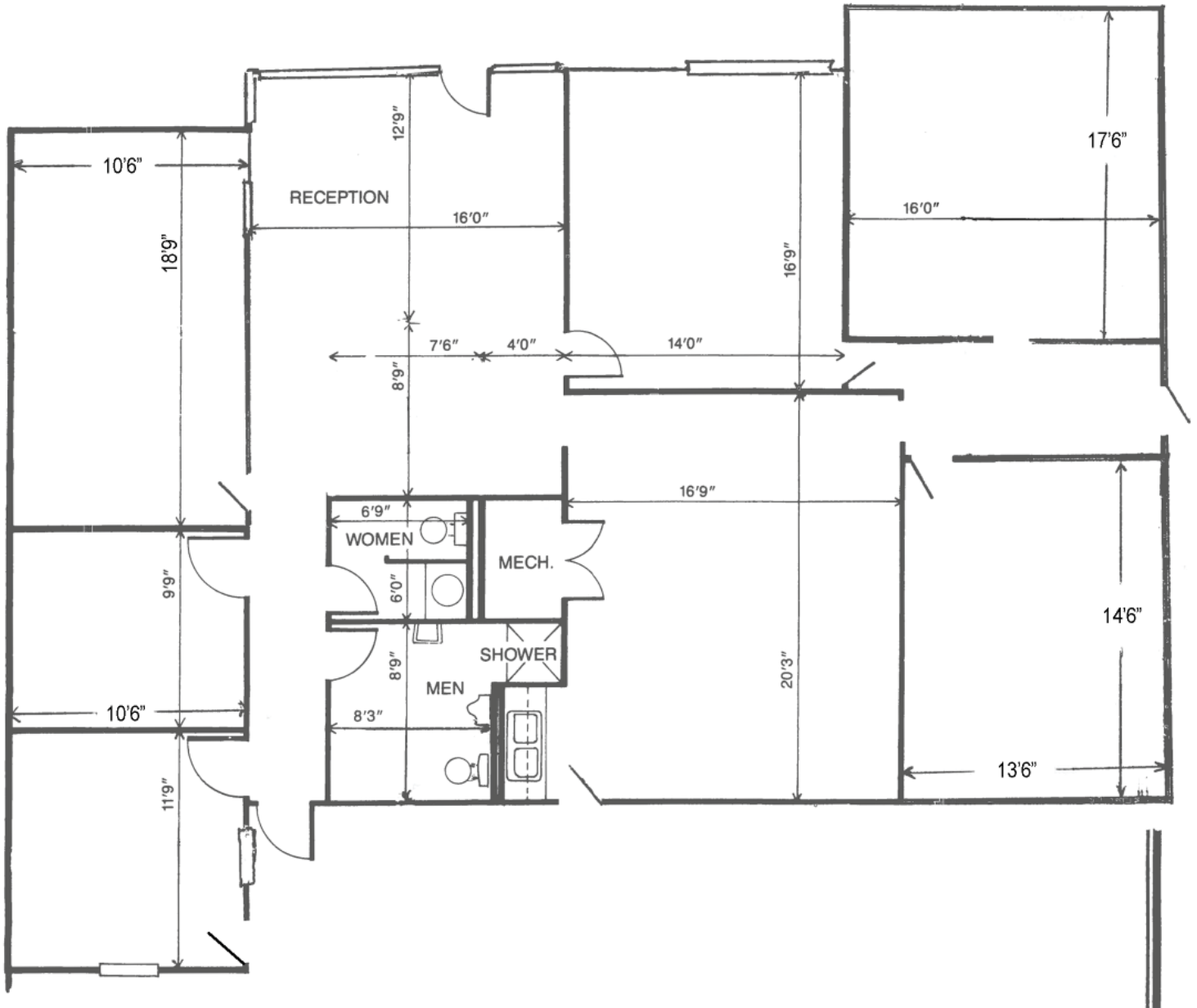
Bob Spletter

NAI Robert Lynn

direct 214 256 7117

email bspletter@robertlynn.com

For Lease
4501-A Ratliff Lane
Addison, Texas
21,600 Square Feet



NAI Robert Lynn

Commercial Real Estate Services, Worldwide.

The information contained herein has been given to us by the owner of the property or other sources we deem reliable. We have no reason to doubt its accuracy, but we do not guarantee it. All information should be verified prior to purchase or lease.

Individual Memberships
SIOR SOCIETY OF
INDUSTRIAL AND
OFFICE REALTORS®