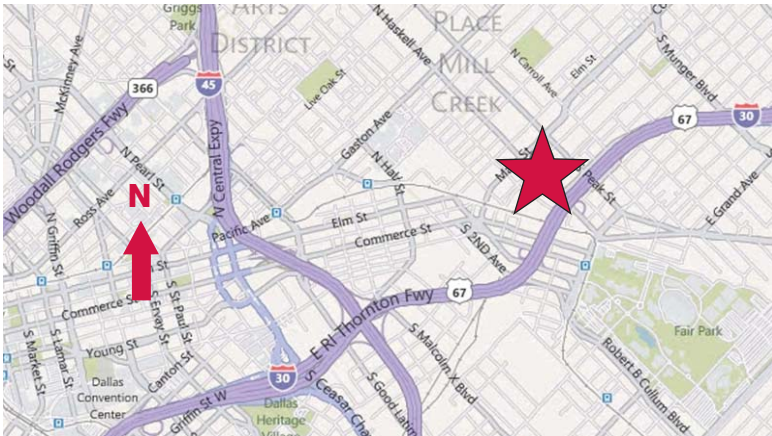


# For Lease

403 S. Haskell Avenue  
Dallas, Texas  
33,740 Square Feet



- Pre-Engineered Steel Building
- ± 500 SF Office
- ± 20'-25' Clear Height
- 2 Dock High Doors (Both With Levelers)
- 3 Grade Level Doors
- Clear Span
- Sprinklered
- Heavy Power

**NAI** Robert Lynn

Commercial Real Estate Services, Worldwide.

**contact information:**

**Robert Blankinship**

NAI Robert Lynn

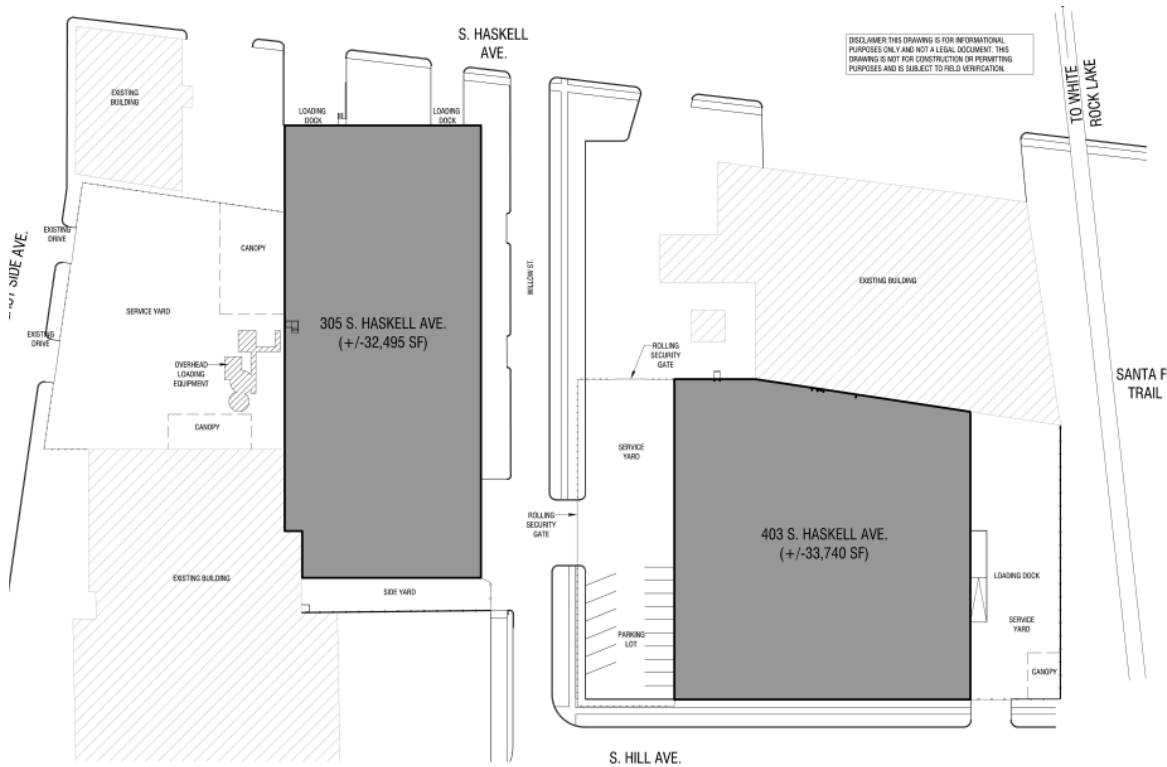
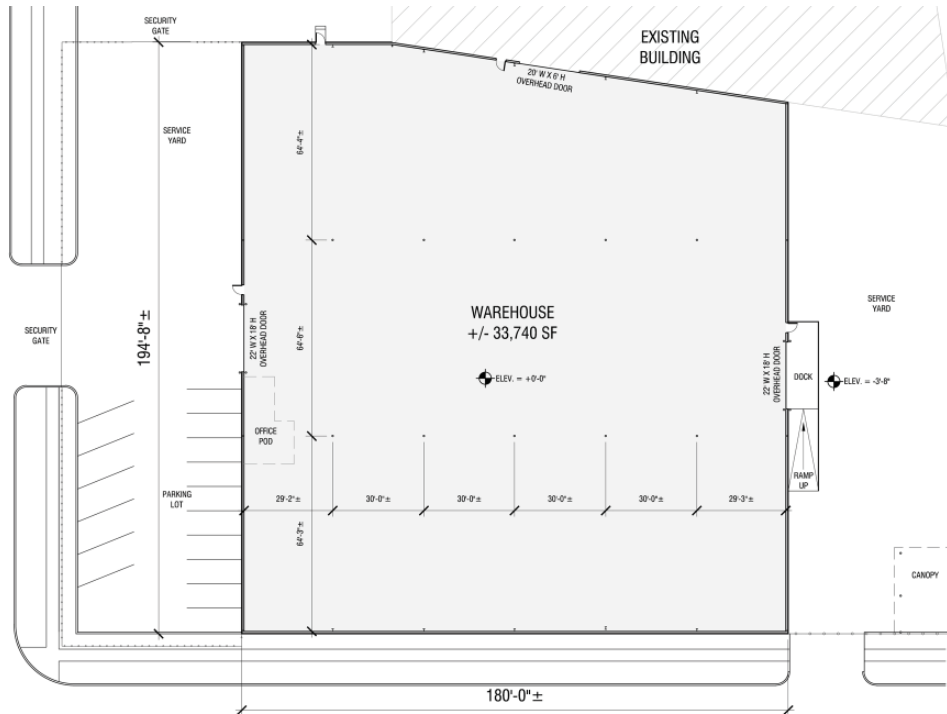
direct 214 256 7115

fax 214 256 7101

email [rblankinship@robertlynn.com](mailto:rblankinship@robertlynn.com)

# For Lease

403 S. Haskell Avenue  
 Dallas, Texas  
 33,740 Square Feet



**NAI Robert Lynn**

Commercial Real Estate Services, Worldwide.

The information contained herein has been given to us by the owner of the property or other sources we deem reliable. We have no reason to doubt its accuracy, but we do not guarantee it. All information should be verified prior to purchase or lease.

Individual Memberships  
**SIOR**  
 SOCIETY OF  
 INDUSTRIAL AND  
 OFFICE REALTORS®