

Midpoint I-20 Distribution Center

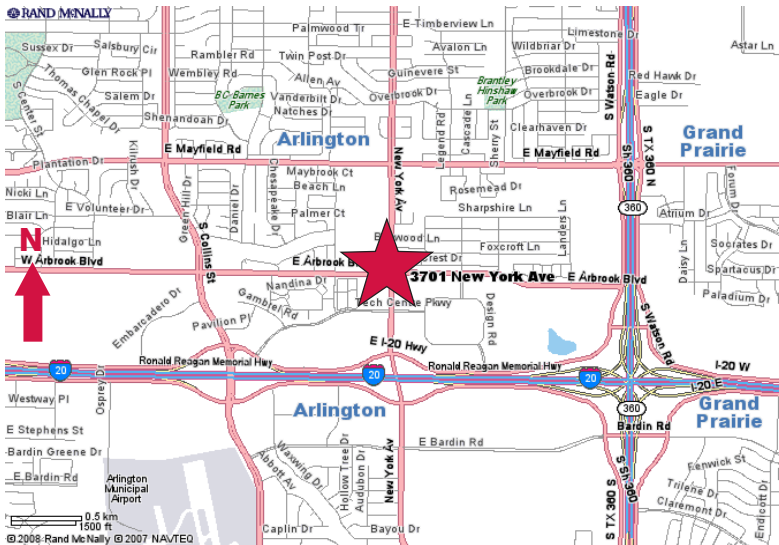
3701 New York Avenue #100

Arlington, Texas

23,243 Square Feet Available For Lease



- Tilt Panel Construction Built In 2001
- ± 3,800 SF Office
- ± 24' Clear Height
- 5 Dock High Doors (2 With Levelers)
- Rear Load
- ESFR Sprinklered
- Abundant Parking
- Immediate Access to I-20 and S.H. 360
- ± 190' Shared Truck Court



Owned & Managed By:

WEINGARTEN REALTY

NAI Robert Lynn

Commercial Real Estate Services, Worldwide.

contact information:

Michael Stanzel

NAI Robert Lynn
direct 214 256 7122
fax 214 256 7101
mstanzel@robertlynn.com

Robert Reese

NAI Robert Lynn
direct 214 256 7166
fax 214 256 7101
rreese@robertlynn.com

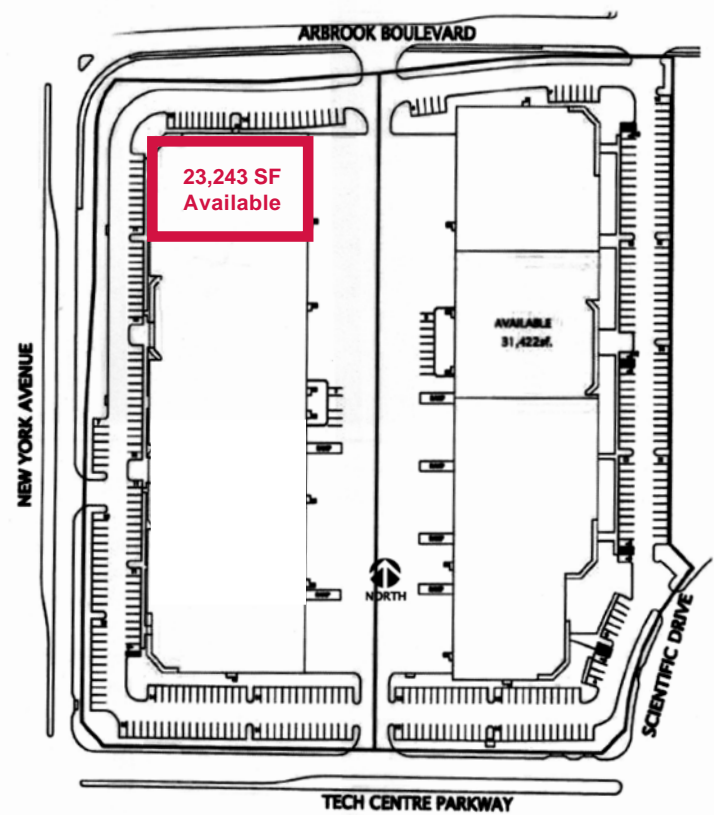
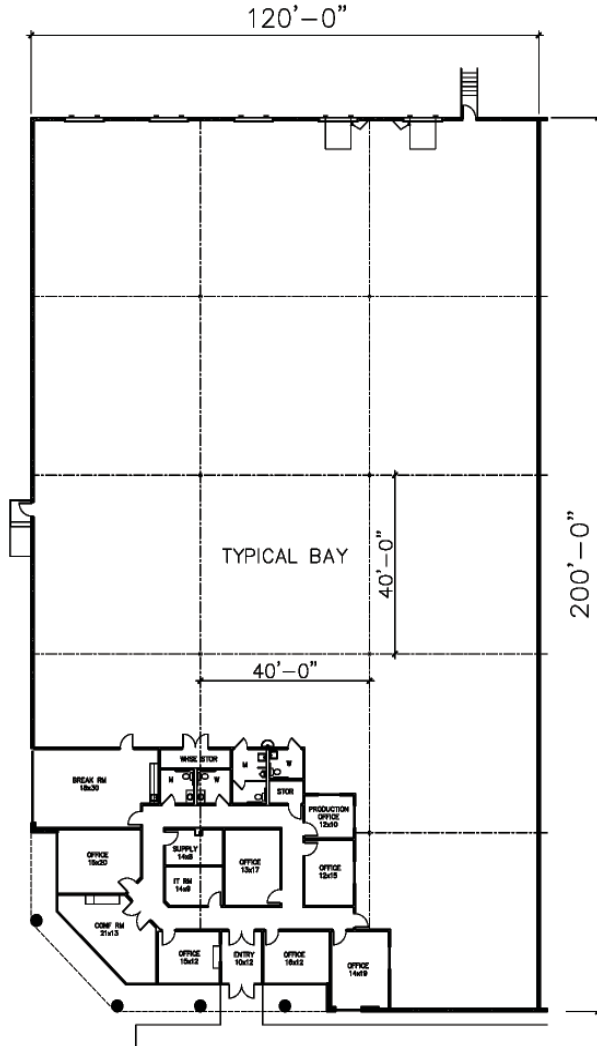
Midpoint I-20 Distribution Center

3701 New York Avenue #100

Arlington, Texas

23,243 Square Feet Available For Lease

Suite 100



Commercial Real Estate Services, Worldwide.

The information contained herein has been given to us by the owner of the property or other sources we deem reliable. We have no reason to doubt its accuracy, but we do not guarantee it. All information should be verified prior to purchase or lease.



Individual Memberships
SOCIETY OF
INDUSTRIAL AND
OFFICE REALTORS®