

For Lease

3226-3228 Skylane Drive

Carrollton, Texas

15,859 - 31,718 Square Feet Available

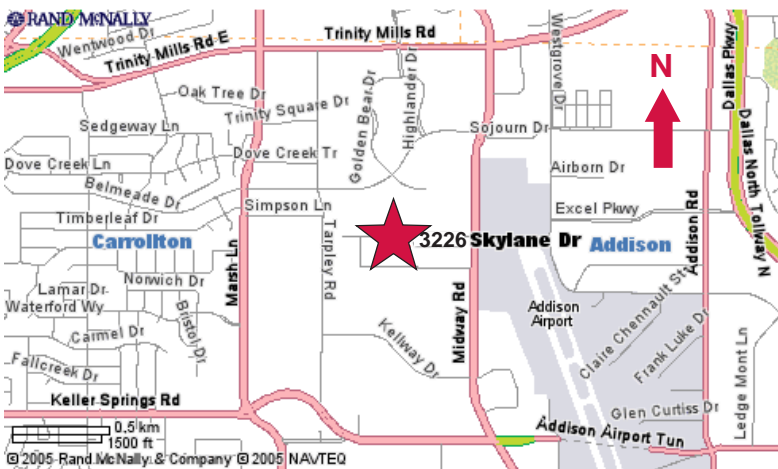


3226 Skylane Drive - 15,859 SF

- ± 2,625 SF Office
- ± 20' Clear Height
- 3 Dock High Doors (1 Ramped)
- Sprinklered
- ± 5,000 SF Outside Storage
- 12 Car Parks
- Sublease Through April 2012

3228 Skylane Drive - 15,859 SF

- ± 2,500 SF Office
- ± 20' Clear Height
- 3 Dock High Doors
- 1 Grade Level Door
- Sprinklered
- Potential Outside Storage



contact information:

Mark Miller, SIOR

NAI Robert Lynn

direct 214 256 7119

fax 214 256 7101

email mmiller@robertlynn.com

Adam Curran

NAI Robert Lynn

direct 214 256 7163

fax 214 256 7101

email acurran@robertlynn.com

Chad Albert

NAI Robert Lynn

direct 214 256 7135

fax 214 256 7101

email calbert@robertlynn.com

NAI Robert Lynn

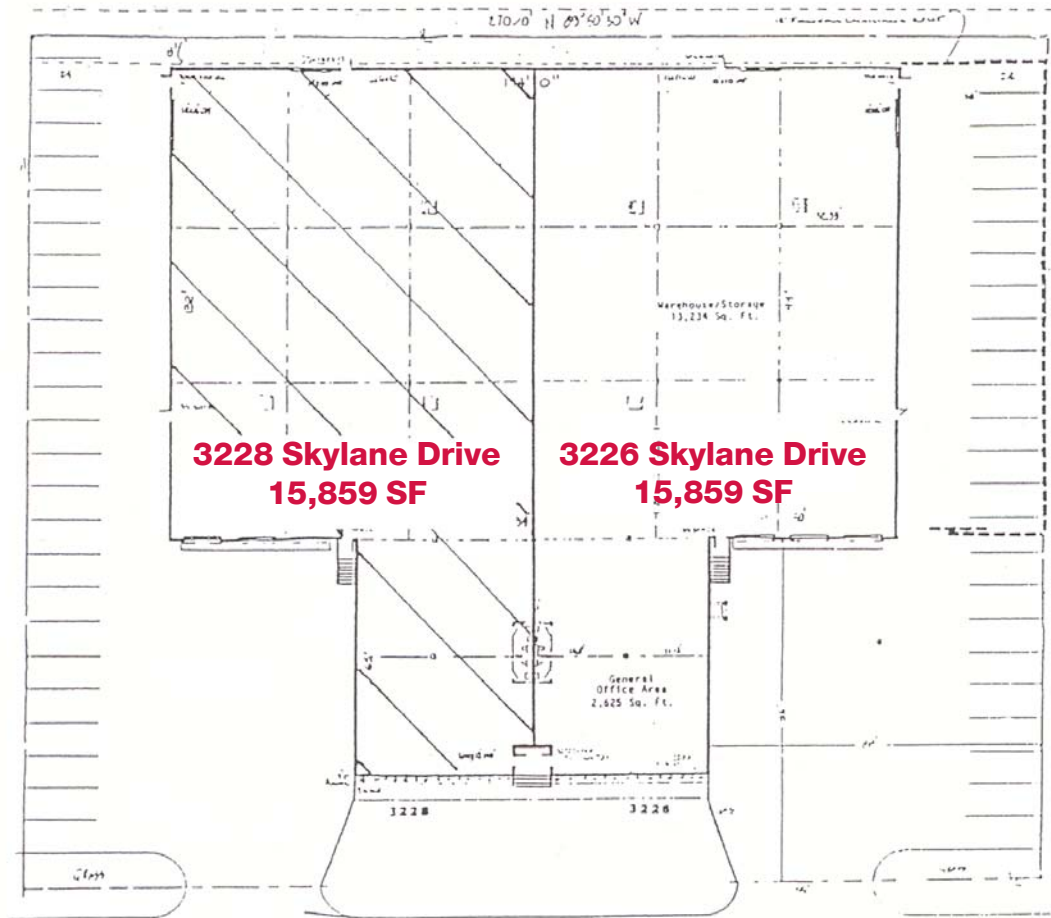
Commercial Real Estate Services, Worldwide.

For Lease

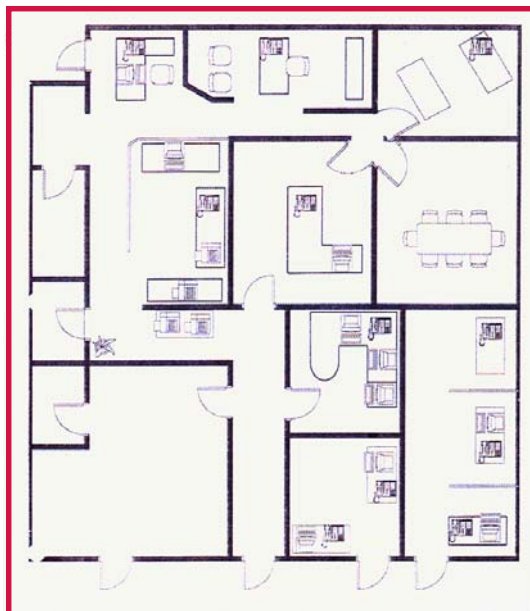
3226-3228 Skylane Drive

Carrollton, Texas

15,859 - 31,718 Square Feet Available



3228 Skylane Drive
Office Area



NAI Robert Lynn

Commercial Real Estate Services, Worldwide.

The information contained herein has been given to us by the owner of the property or other sources we deem reliable. We have no reason to doubt its accuracy, but we do not guarantee it. All information should be verified prior to purchase or lease.

Individual Memberships
SIOR SOCIETY OF
INDUSTRIAL AND
OFFICE REALTORS®