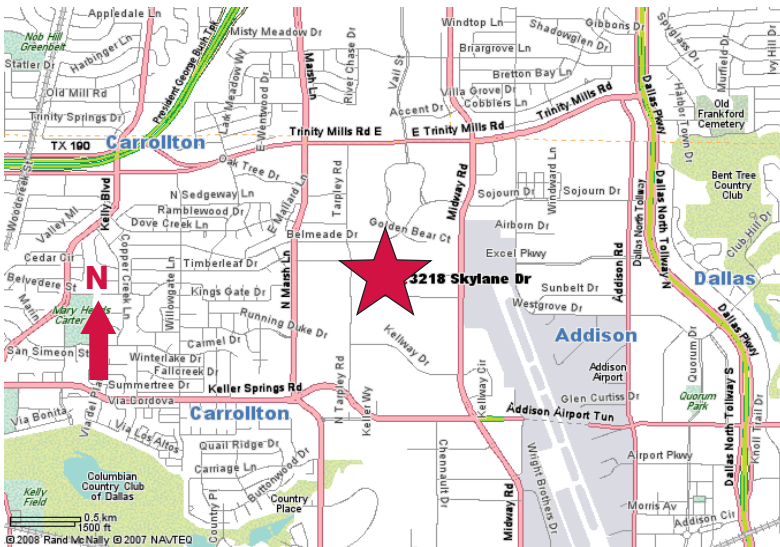


For Lease

3218 Skylane Drive, Suite 100

Carrollton, Texas

15,410 Square Feet



- ± 1,600 SF Office
- ± 20' Clear Height
- 2 Dock High Doors
- 1 Oversized Grade Level Door
- Sprinklered
- Possible Outside Storage

contact information:

Mark Miller, SIOR

NAI Robert Lynn

direct 214 256 7119

mmiller@robertlynn.com

Adam Curran

NAI Robert Lynn

direct 214 256 7163

acurran@robertlynn.com

Becky Miller

NAI Robert Lynn

direct 214 256 7107

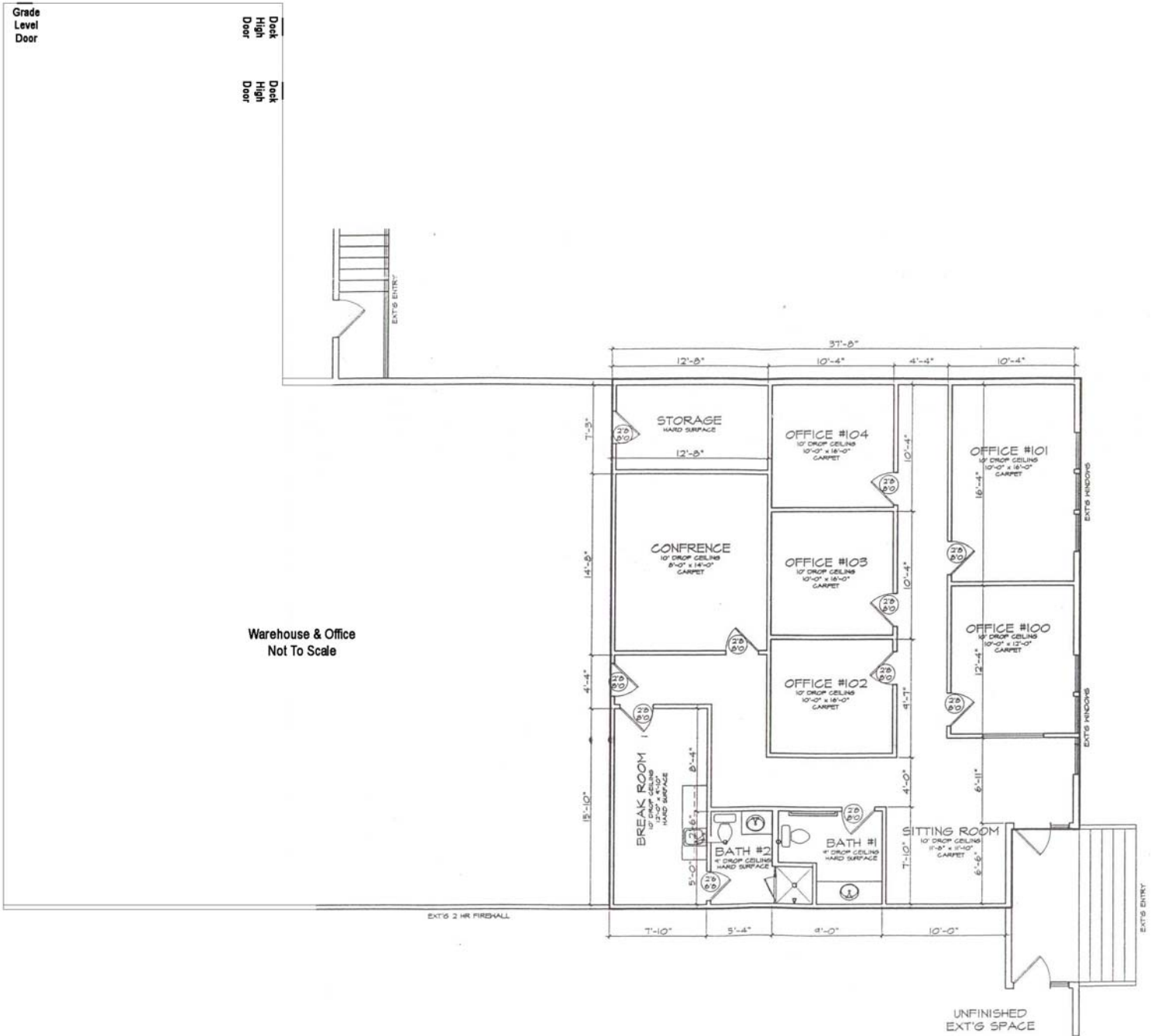
bmiller@robertlynn.com

NAI Robert Lynn

Commercial Real Estate Services, Worldwide.

For Lease

3218 Skylane Drive, Suite 100
Carrollton, Texas
15,410 Square Feet



Commercial Real Estate Services, Worldwide.

The information contained herein has been given to us by the owner of the property or other sources we deem reliable. We have no reason to doubt its accuracy, but we do not guarantee it. All information should be verified prior to purchase or lease.

