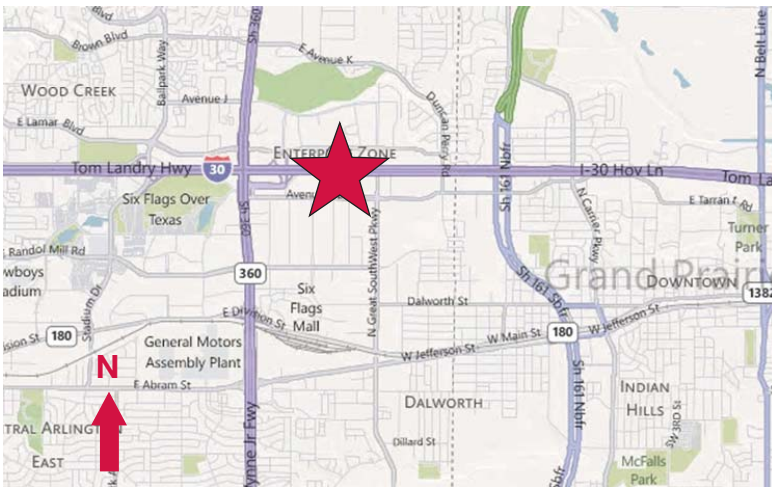


For Lease

3211 Avenue E, East
Arlington, Texas
6,550 Square Feet



- ± 1,044 SF Office
- ± 16' Clear Height
- 1 Dock High Door
- Heavy Power
- ± 10 Car Parks

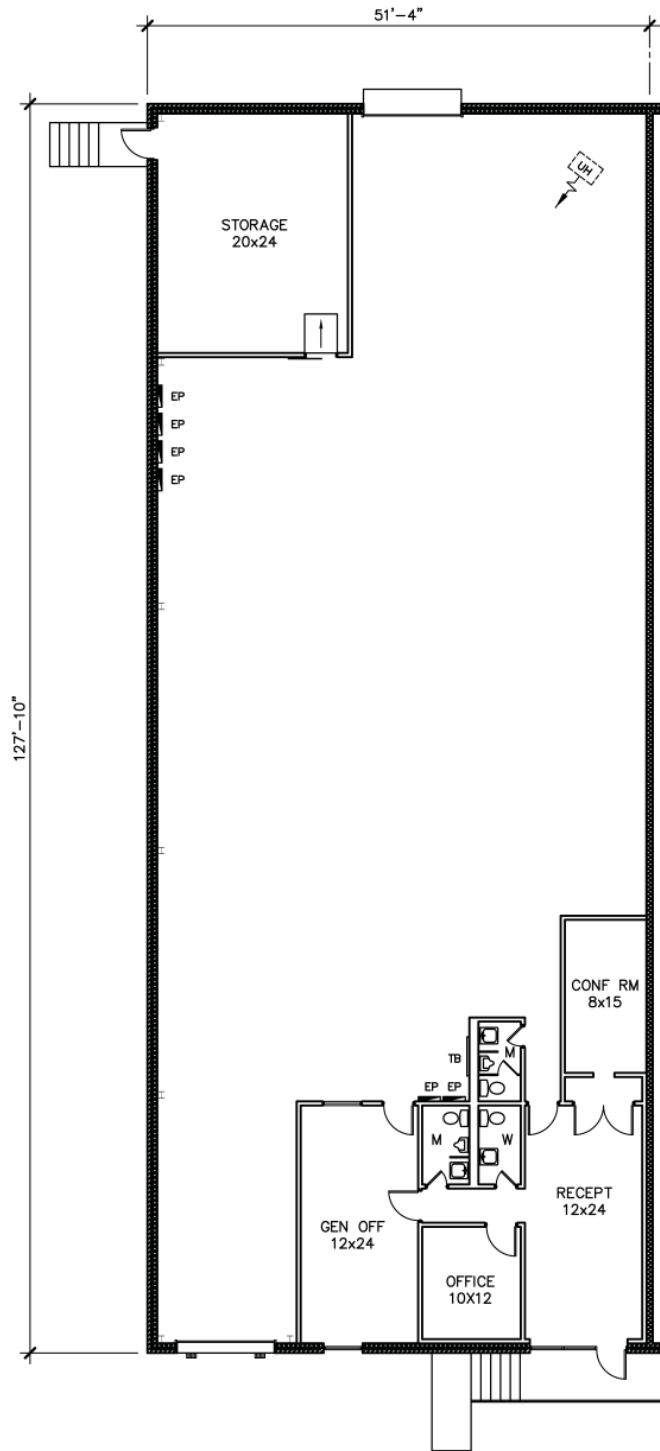


NAI Robert Lynn
Commercial Real Estate Services, Worldwide.

contact information:
Michael Stanzel, SIOR
NAI Robert Lynn
direct 214 256 7122
fax 214 256 7101
email mstanzel@robertlynn.com

For Lease

3211 Avenue E, East
Arlington, Texas
6,550 Square Feet



NAI Robert Lynn

Commercial Real Estate Services, Worldwide.

The information contained herein has been given to us by the owner of the property or other sources we deem reliable. We have no reason to doubt its accuracy, but we do not guarantee it. All information should be verified prior to purchase or lease.

Individual Memberships
SOCIETY OF
INDUSTRIAL AND
OFFICE REALTORS®