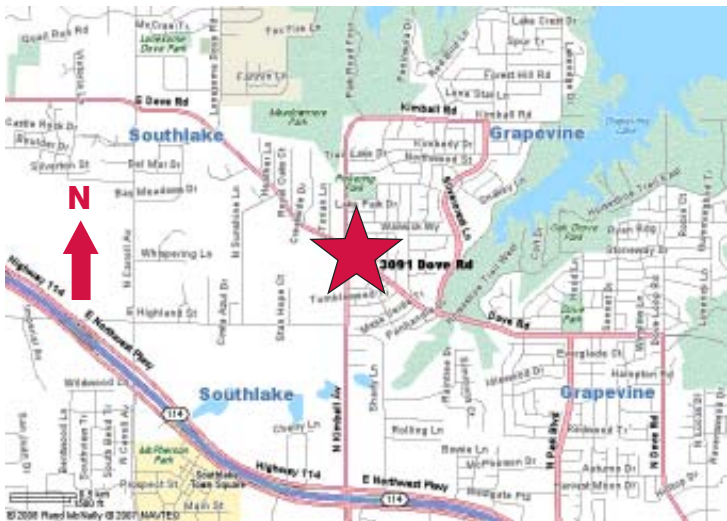


For Sale

3091 Dove Road
Grapevine, Texas
± 2.74 Acres of Land

**PRICE
REDUCED!**



- Zoned Professional Office
- Corner Lot
- Conveniently Located ± 1 Mile From Southlake Town Square & Less Than 1 Mile From Grapevine Lake
- Street Frontage:
 - 664' on N. Kimball Avenue
 - 441' on Dove Road
- Traffic Count:
 - 17,800 Cars Per Day on N. Kimball Avenue
 - 4,000 Cars Per Day on Dove Road

contact information:

Todd Hubbard, SIOR

NAI Robert Lynn

direct 817 501 2012

email thubbard@robertlynn.com

Michael Newsome

NAI Robert Lynn

direct 214 770 5070

email mnewsome@robertlynn.com

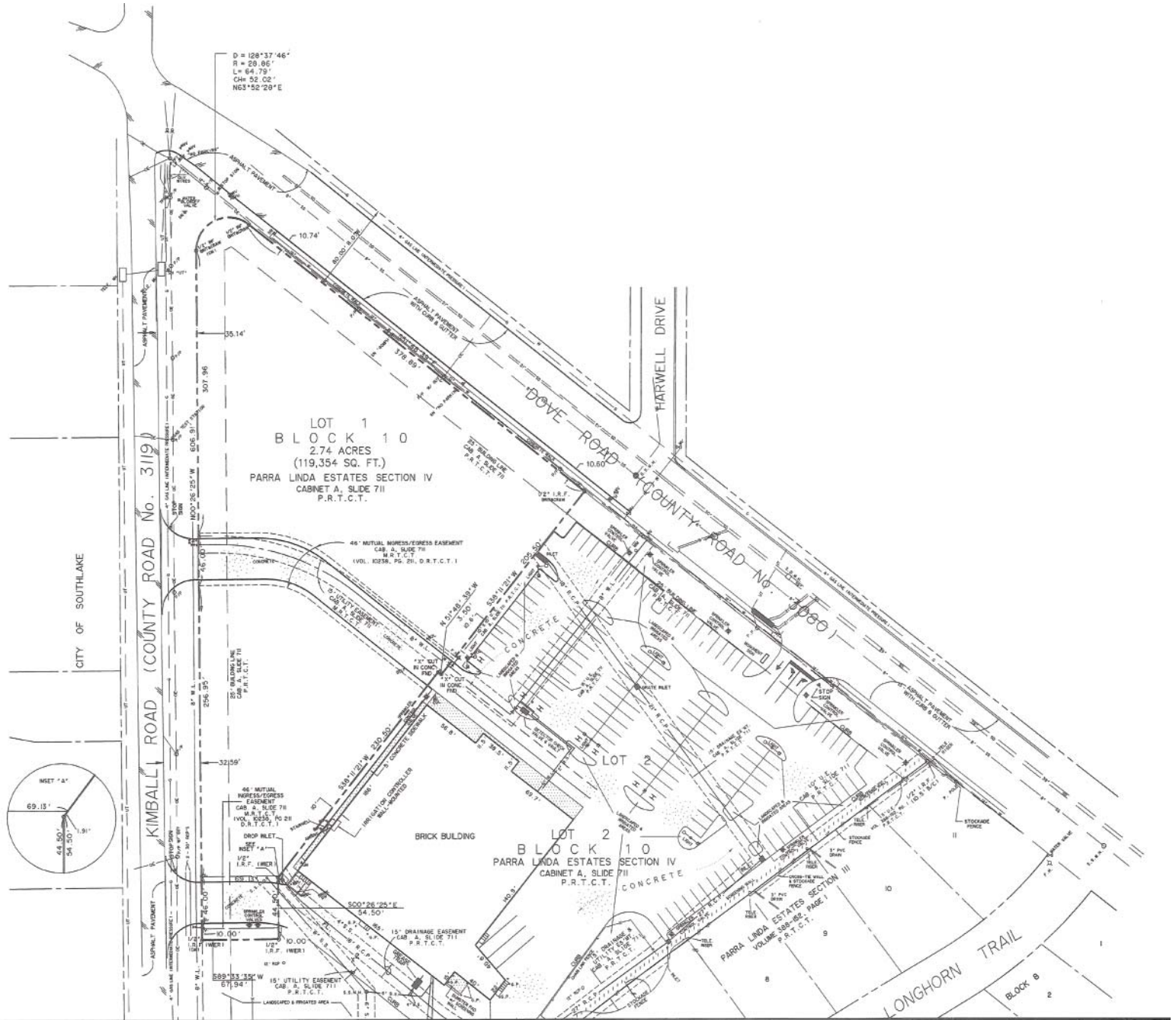
NAI Robert Lynn

Commercial Real Estate Services, Worldwide.

For Sale

3091 Dove Road
Grapevine, Texas

± 2.74 Acres of Land



NAI Robert Lynn

Commercial Real Estate Services, Worldwide.

The information contained herein has been given to us by the owner of the property or other sources we deem reliable. We have no reason to doubt its accuracy, but we do not guarantee it. All information should be verified prior to purchase or lease.



Individual Memberships
SOCIETY OF
INDUSTRIAL AND
OFFICE REALTORS®