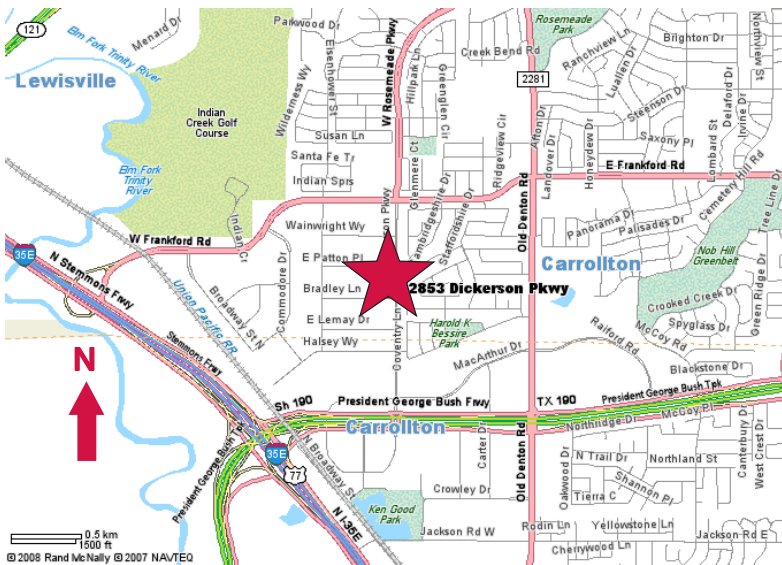


For Sublease

2853 Dickerson Parkway, Suite 114
Carrollton, Texas
22,000 Square Feet



- ± 16,500 SF Office
- ± 18' Clear Height
- 3 Dock High Doors
(1 Ramped & 1 With Leveler)
- All Air-Conditioned
- Sprinklered
- Heavy Power
- Sublease Through July 2010



contact information:

Chad Albert

NAI Robert Lynn
direct 214 256 7135
fax 214 256 7101
email calbert@robertlynn.com

Becky Miller

NAI Robert Lynn
direct 214 256 7107
fax 214 256 7101
email bmiller@robertlynn.com

Mark Miller, SIOR

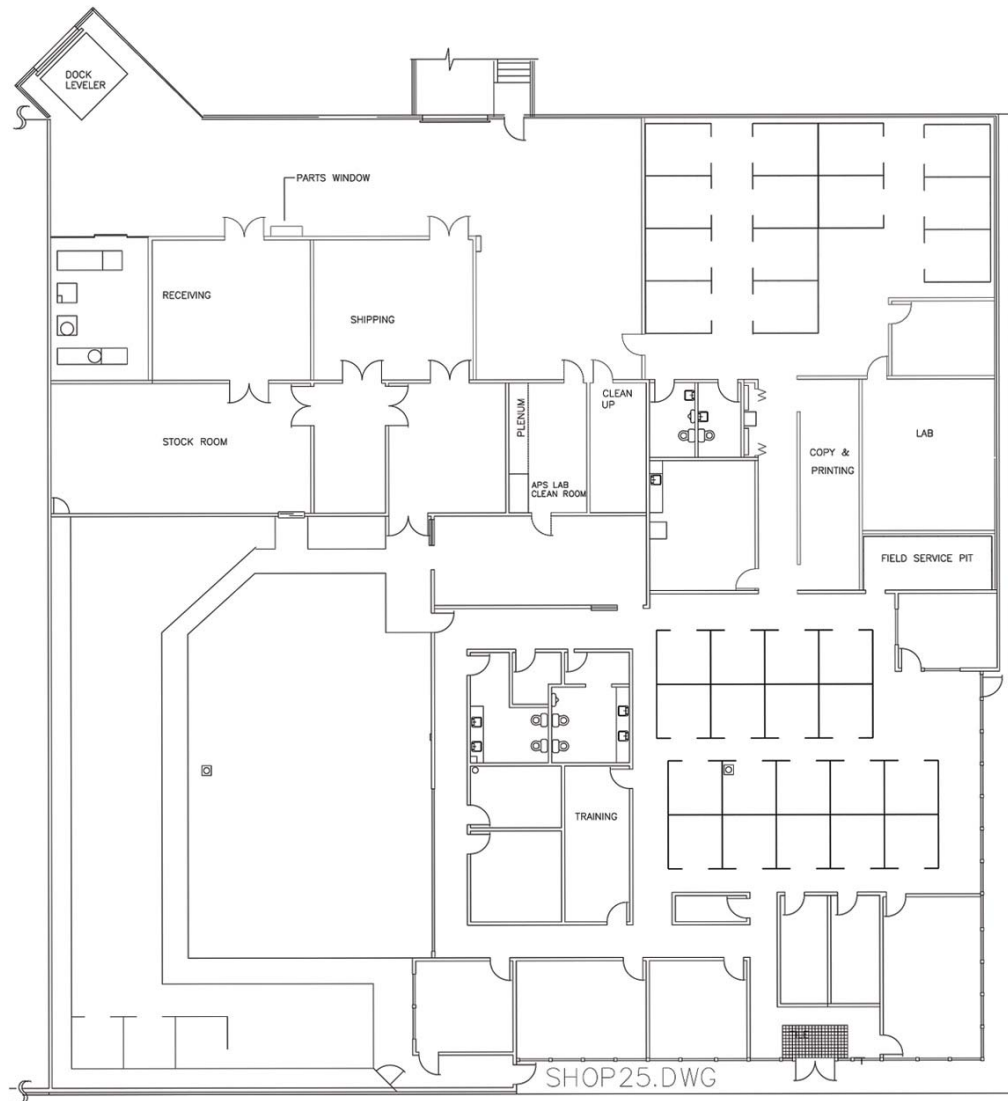
NAI Robert Lynn
direct 214 256 7119
fax 214 256 7101
email mmiller@robertlynn.com



Commercial Real Estate Services, Worldwide.

For Sublease

2853 Dickerson Parkway, Suite 114
Carrollton, Texas
22,000 Square Feet



NAI Robert Lynn
Commercial Real Estate Services, Worldwide.

The information contained herein has been given to us by the owner of the property or other sources we deem reliable. We have no reason to doubt its accuracy, but we do not guarantee it. All information should be verified prior to purchase or lease.

Individual Memberships
SIOR SOCIETY OF
INDUSTRIAL AND
OFFICE REALTORS®