

# For Lease

2609 Nova Drive  
Dallas, Texas  
19,901 Square Feet



- ± 2,119 SF Office
- ± 16' Clear Height
- 5 Dock High Doors (2 Ramped)
- Cross Dock
- 3 Phase Power
- ± 26 Car Parks
- ± 7,000 SF Fenced Outside Storage
- Located Near I-35E & I-635



## contact information:

**Jim Svidron**

NAI Robert Lynn

direct 214 256 7128

fax 214 256 7101

email [jsvidron@robertlynn.com](mailto:jsvidron@robertlynn.com)

**Thomas T. Lynn, SIOR**

NAI Robert Lynn

direct 214 256 7123

fax 214 256 7101

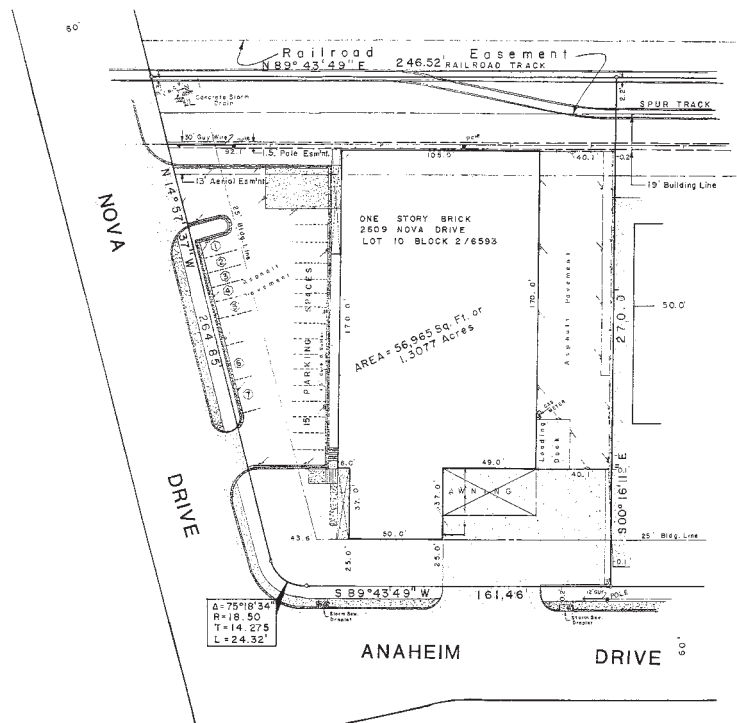
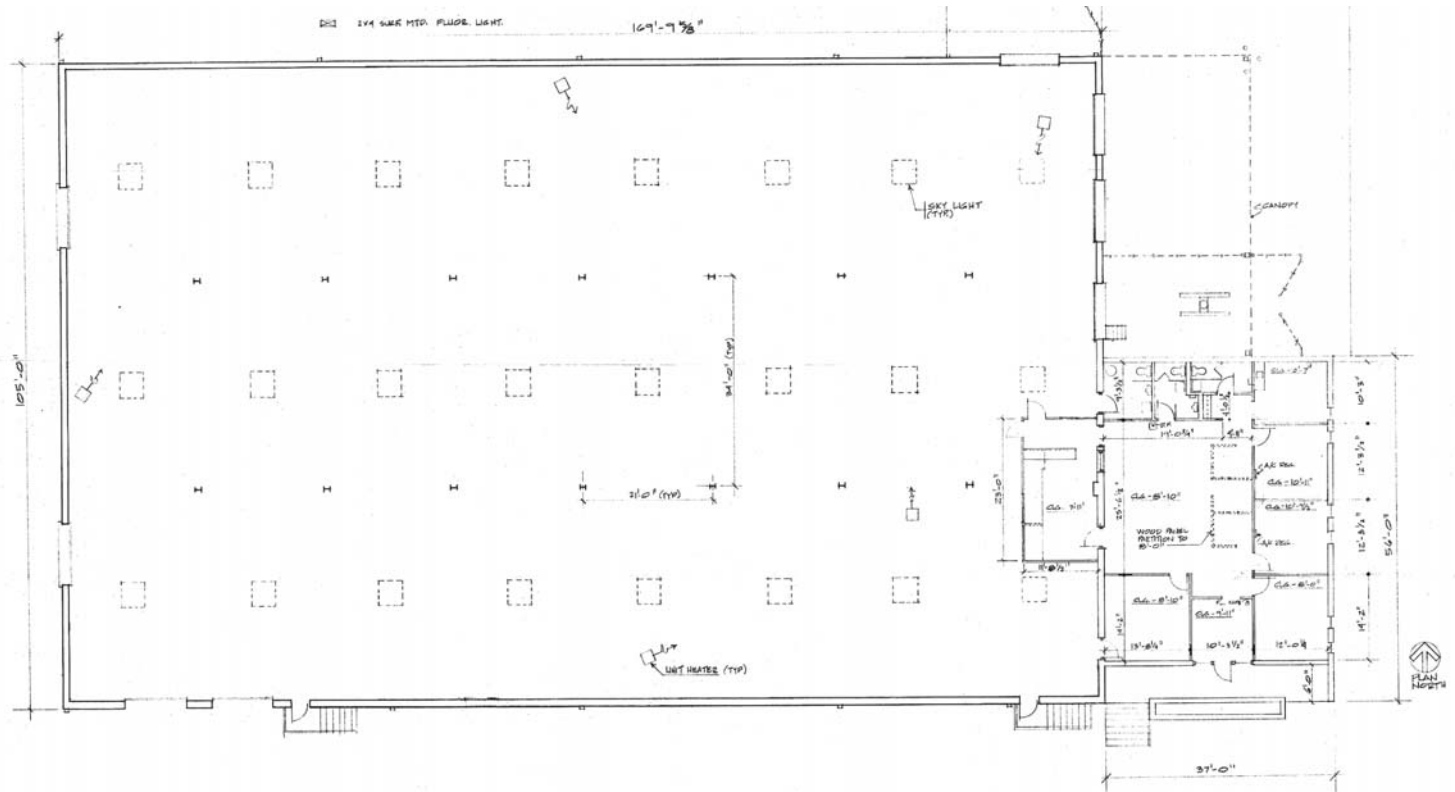
email [tlynn@robertlynn.com](mailto:tlynn@robertlynn.com)

**NAI Robert Lynn**

Commercial Real Estate Services, Worldwide.

# For Lease

2609 Nova Drive  
 Dallas, Texas  
 19,901 Square Feet



**NAI Robert Lynn**  
 Commercial Real Estate Services, Worldwide.

The information contained herein has been given to us by the owner of the property or other sources we deem reliable. We have no reason to doubt its accuracy, but we do not guarantee it. All information should be verified prior to purchase or lease.

Individual Memberships  
**SOCIETY OF INDUSTRIAL AND OFFICE REALTORS®**