

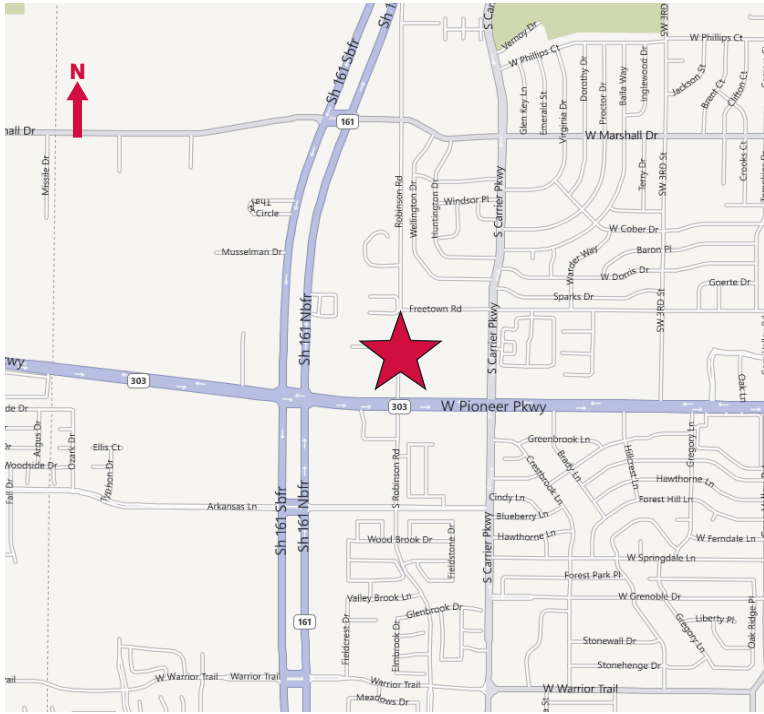


LEASE



2455 Robinson Road
Grand Prairie, Texas 75051
± 2,000 Square Feet

- 2,000 SF Class “B” Medical Office
- Second Generation Doctor’s Office
- Move-In Ready
- Easy Access to Highway 360



NAI Robert Lynn

Commercial Real Estate Services, Worldwide.

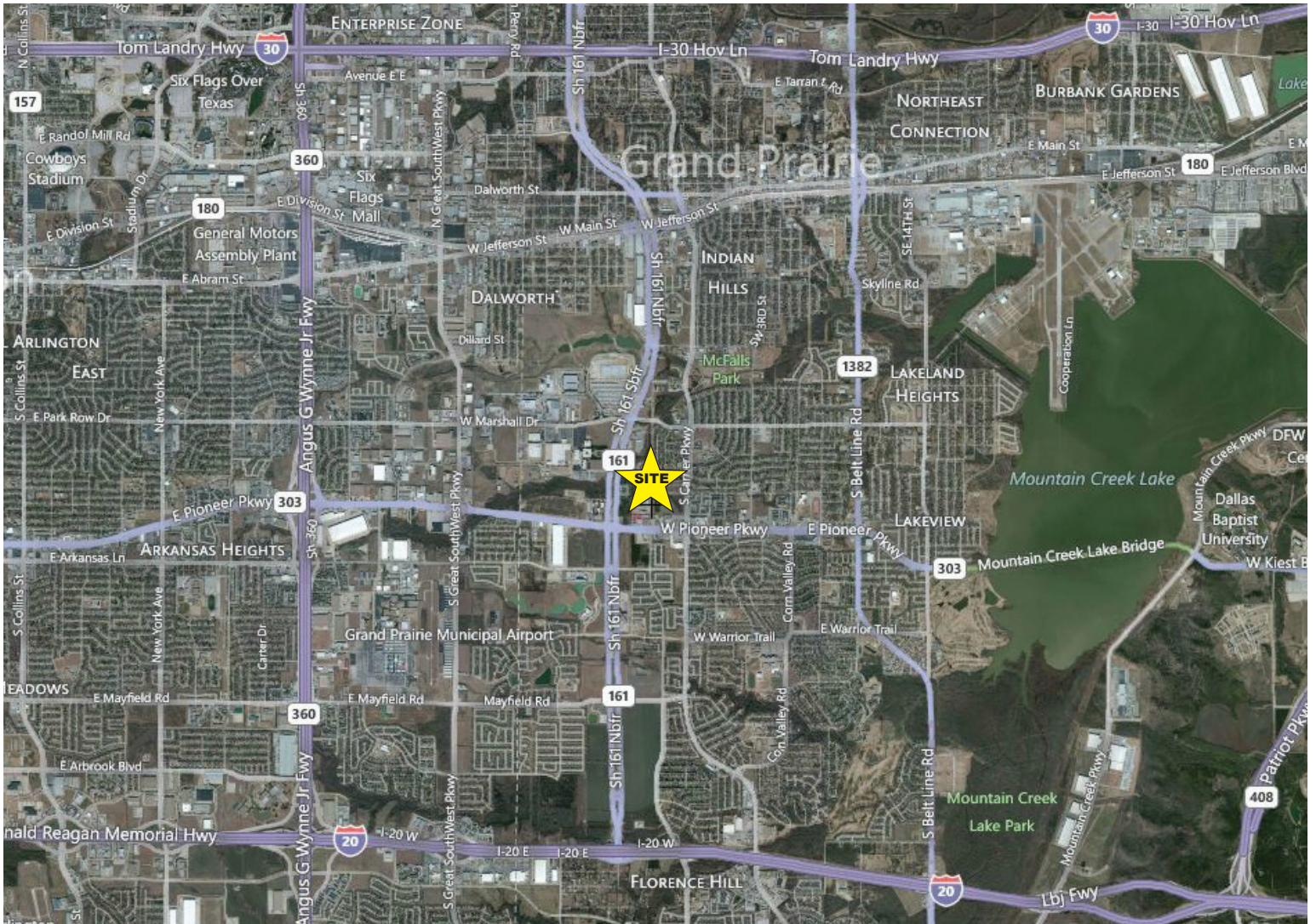
contact information

Jon McDaniel
 NAI Robert Lynn
 direct 817 872 3902
 fax 214 256 7101
 email jmcdaniel@robertlynn.com

2455 Robinson Road

Grand Prairie, Texas 75051

± 2,000 Square Feet



	<u>RADIUS</u>		
<u>2010 Figures</u>	<u>1 Mile</u>	<u>3 Miles</u>	<u>5 Miles</u>
Total Population	11,917	108,429	236,438
Total Households	4,097	35,706	78,116
Average Household Income	\$56,851	\$61,888	\$65,564
Average Household Size	2.91	3.03	3.02

NAI Robert Lynn
Commercial Real Estate Services, Worldwide.



The information contained herein has been given to us by the owner of the property or other sources we deem reliable. We have no reason to doubt its accuracy, but we do not guarantee it. All information should be verified prior to purchase or lease.