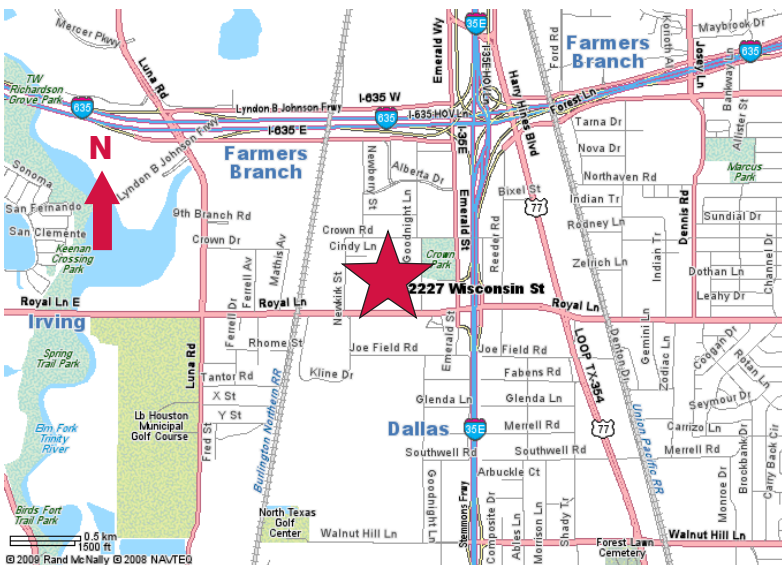


For Lease

2227 Wisconsin Street
Dallas, Texas
7,500 Square Feet



- ± 1,200 SF Office
- ± 16' Eave
- 3 Grade Level Doors
- Freestanding
- Fenced Outside Storage
- Good Parking



contact information:

Bob Spletter

NAI Robert Lynn
direct 214 256 7117
fax 214 256 7101
email bspletter@robertlynn.com

Zach Spletter

NAI Robert Lynn
direct 214 256 7121
fax 214 256 7101
email bspletter@robertlynn.com



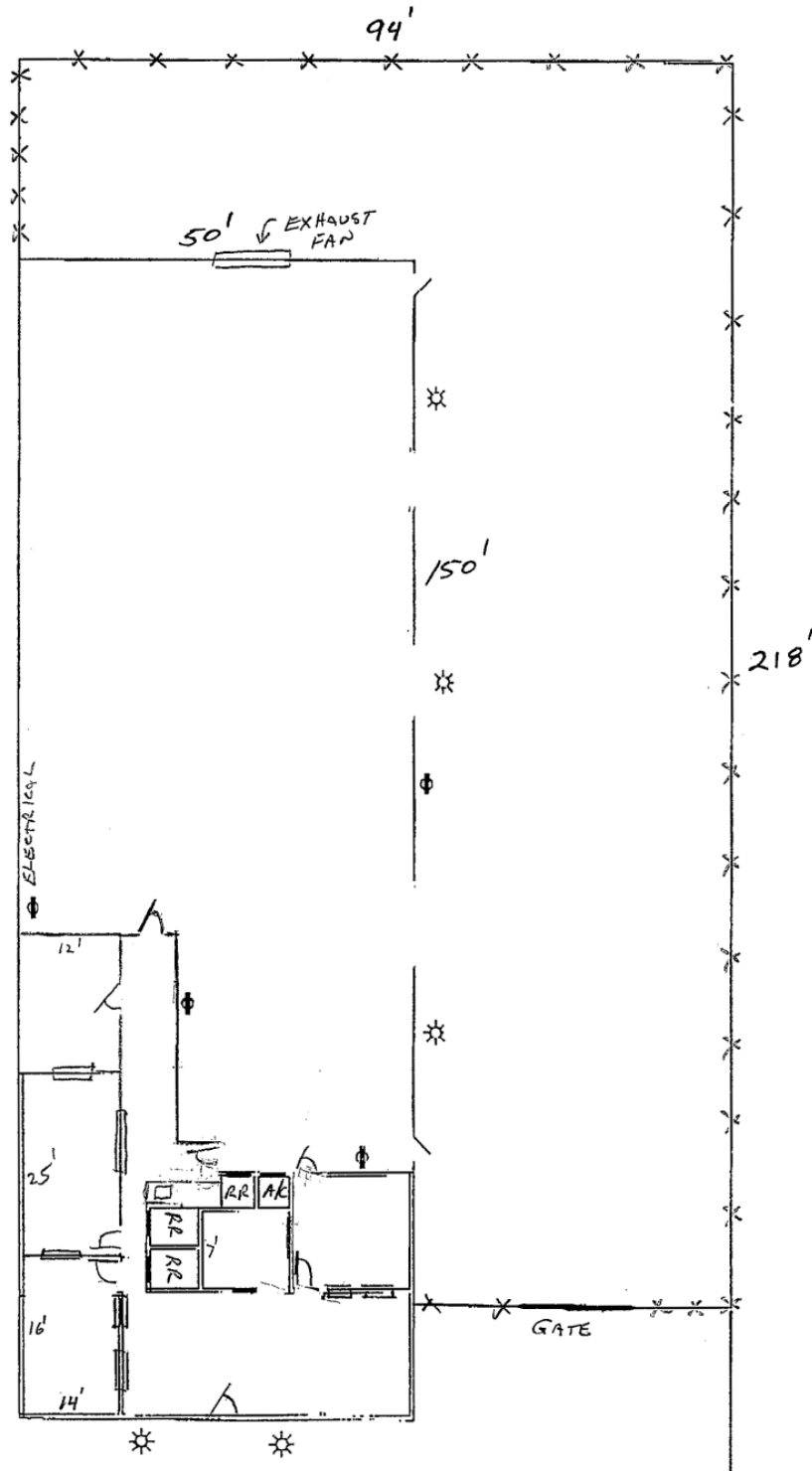
Commercial Real Estate Services, Worldwide.

For Lease

2227 Wisconsin Street

Dallas, Texas

7,500 Square Feet



NAI Robert Lynn

Commercial Real Estate Services, Worldwide.

The information contained herein has been given to us by the owner of the property or other sources we deem reliable. We have no reason to doubt its accuracy, but we do not guarantee it. All information should be verified prior to purchase or lease.

Individual Memberships
SOCIETY OF
INDUSTRIAL AND
OFFICE REALTORS®