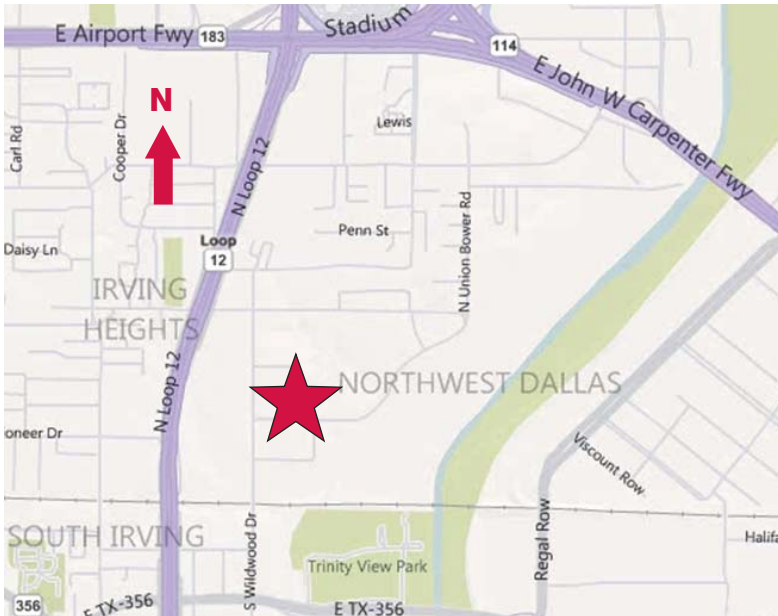


For Lease

2205 E. Pioneer Drive
Irving, Texas
± 54,047 Square Feet



- ± 300 SF Office
- ± 22' Clear Height
- 4 Dock High Doors
- 1 Semi Dock High Door
- Sprinklered
- Heavy Power



NAI Robert Lynn

Commercial Real Estate Services, Worldwide.

contact information:

Robert Blankinship

NAI Robert Lynn

direct 214 256 7115

fax 214 256 7101

email rblankinship@robertlynn.com

Jim Svidron

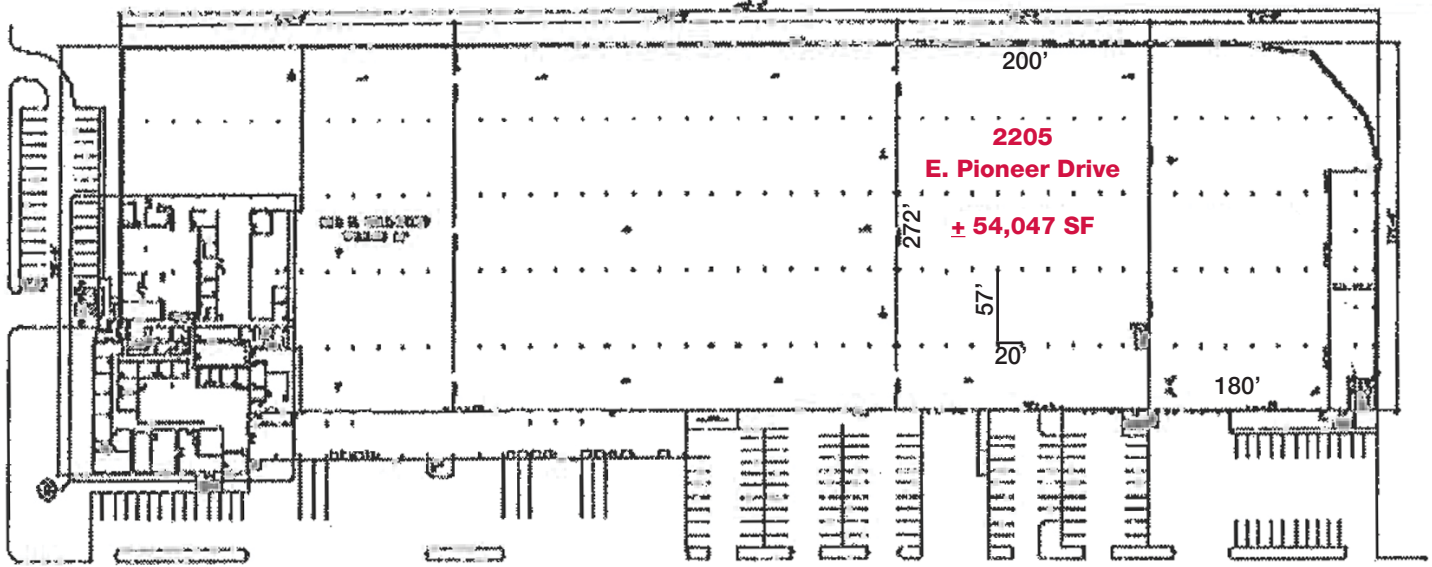
NAI Robert Lynn

direct 214 256 7172

fax 214 256 7101

email jsvidron@robertlynn.com

For Lease
2205 E. Pioneer Drive
Irving, Texas
± 54,047 Square Feet



NAI Robert Lynn
Commercial Real Estate Services, Worldwide.

The information contained herein has been given to us by the owner of the property or other sources we deem reliable. We have no reason to doubt its accuracy, but we do not guarantee it. All information should be verified prior to purchase or lease.

Individual Memberships
SIOR SOCIETY OF
INDUSTRIAL AND
OFFICE REALTORS®