

For Lease

2125 Chenault Drive, Suite 101-102
Carrollton, Texas
38,267 Square Feet



Suite 101

- 20,758 Square Feet
- ± 4,652 SF Office
- ± 22' Clear Height
- 5 Dock High Doors (1 Ramped)
- All Air-Conditioned
- Sprinklered
- Heavy Power
- ± 38 Car Parks
- Above Average Finish Out
- Full Bath in Executive Office
- Can Combine With Suite 102

Suite 102

- 17,509 Square Feet
- ± 4,655 SF Office
- ± 22' Clear Height
- 3 Dock High Doors (1 Drive-In)
- All Air-Conditioned
- Sprinklered
- Heavy Power
- ± 32 Car Parks
- Above Average Finish Out
- Full Bath in Executive Office
- Can Combine With Suite 101



contact information:

Chad Albert

NAI Robert Lynn
direct 214 256 7135
fax 214 256 7101
email calbert@robertlynn.com

Mark Miller, SIOR

NAI Robert Lynn
direct 214 256 7119
fax 214 256 7101
email mmiller@robertlynn.com

NAI Robert Lynn

Commercial Real Estate Services, Worldwide.

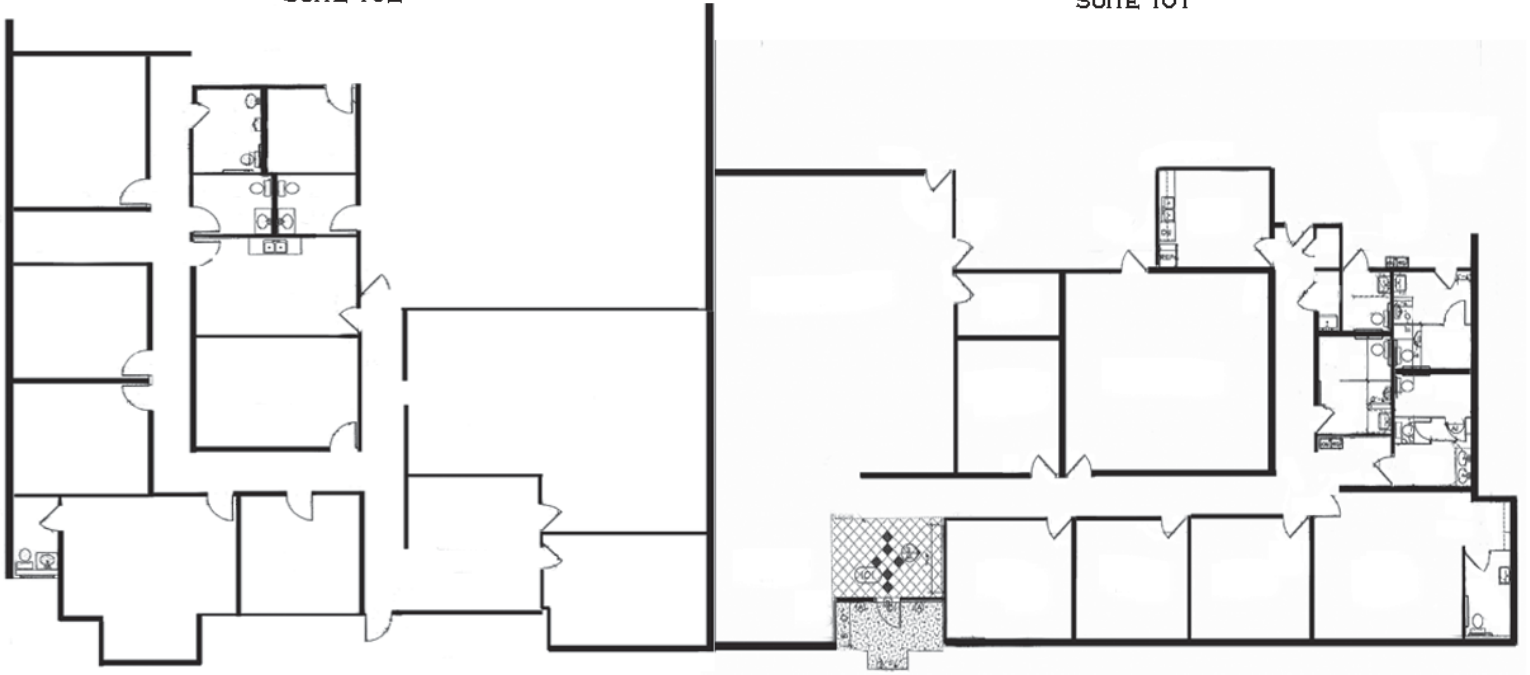
For Lease

2125 Chenault Drive, Suite 101-102
Carrollton, Texas
38,267 Square Feet

2125 CHENAULT DRIVE

SUITE 102

SUITE 101



NAI Robert Lynn

Commercial Real Estate Services, Worldwide.

The information contained herein has been given to us by the owner of the property or other sources we deem reliable. We have no reason to doubt its accuracy, but we do not guarantee it. All information should be verified prior to purchase or lease.

Individual Memberships
SIOR
SOCIETY OF
INDUSTRIAL AND
OFFICE REALTORS®