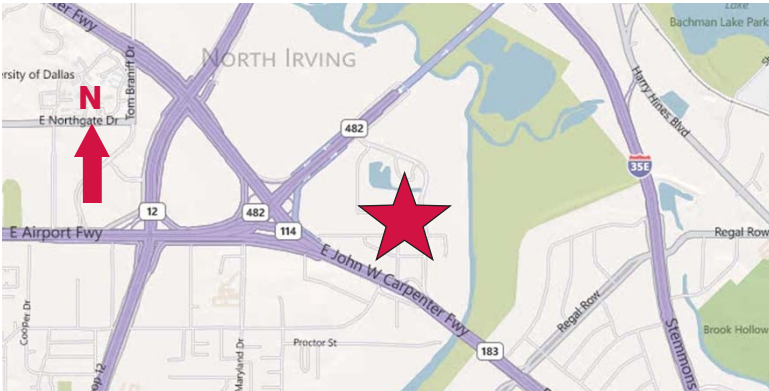


For Lease

2120 Regency Drive
Irving, Texas
8,348 Square Feet



- ± 4,568 SF Office
- ± 16' Clear Height
- 4 Grade Level Doors (12' x 14')
- 2 Drive Thru Lanes
- Fenced Outside Storage / Parking



NAI Robert Lynn

Commercial Real Estate Services, Worldwide.

contact information:

Bob Spletter

NAI Robert Lynn

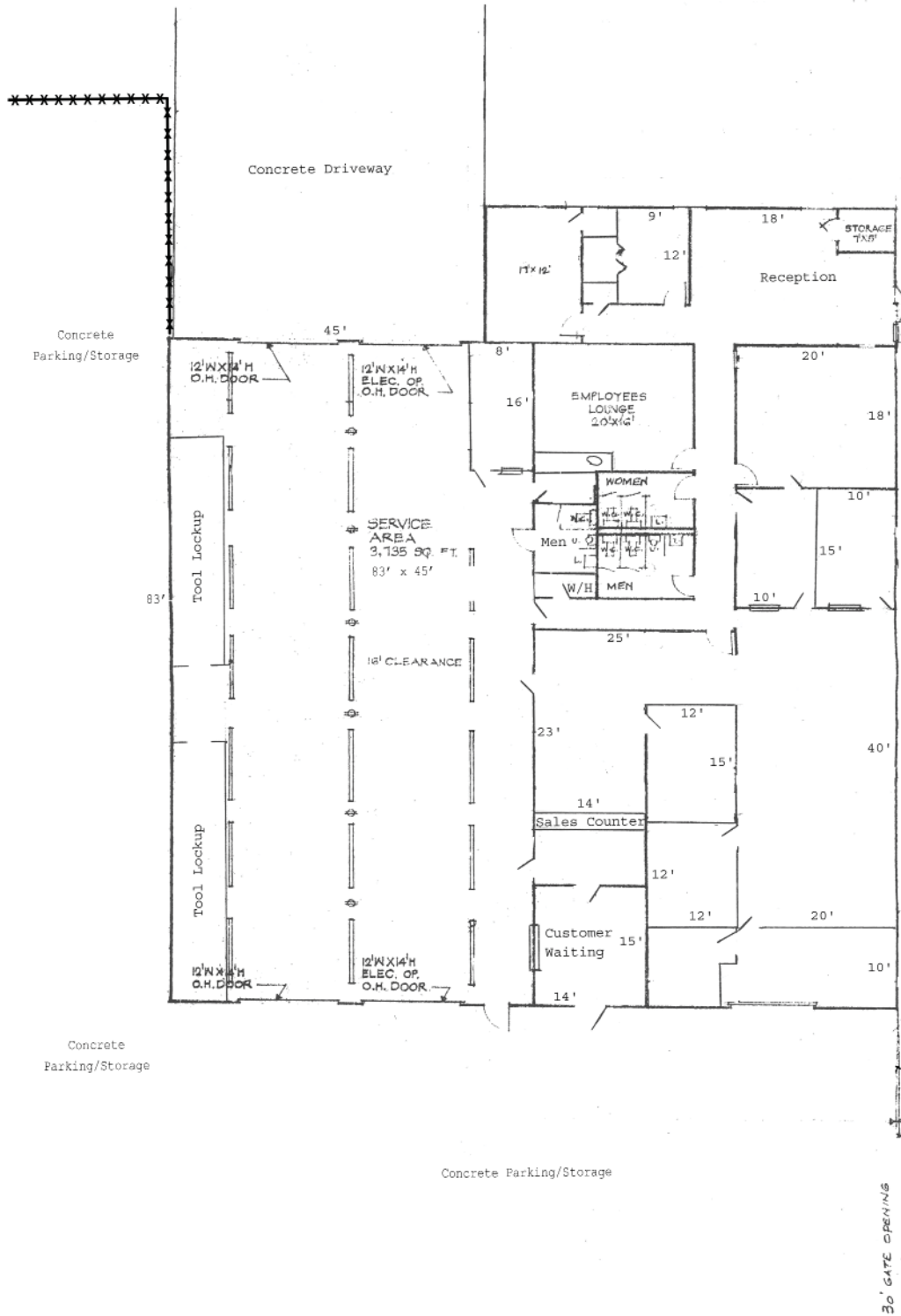
direct 214 256 7117

fax 214 256 7101

email bspletter@robertlynn.com

For Lease

2120 Regency Drive
Irving, Texas
8,348 Square Feet



NAI Robert Lynn

Commercial Real Estate Services, Worldwide.

The information contained herein has been given to us by the owner of the property or other sources we deem reliable. We have no reason to doubt its accuracy, but we do not guarantee it. All information should be verified prior to purchase or lease.

Individual Memberships
SIOR
SOCIETY OF
INDUSTRIAL AND
OFFICE REALTORS®