

For Lease

1705 Wallace Drive, Suites 104 & 112

Carrollton, Texas

17,325 Square Feet / 17,325 Square Feet

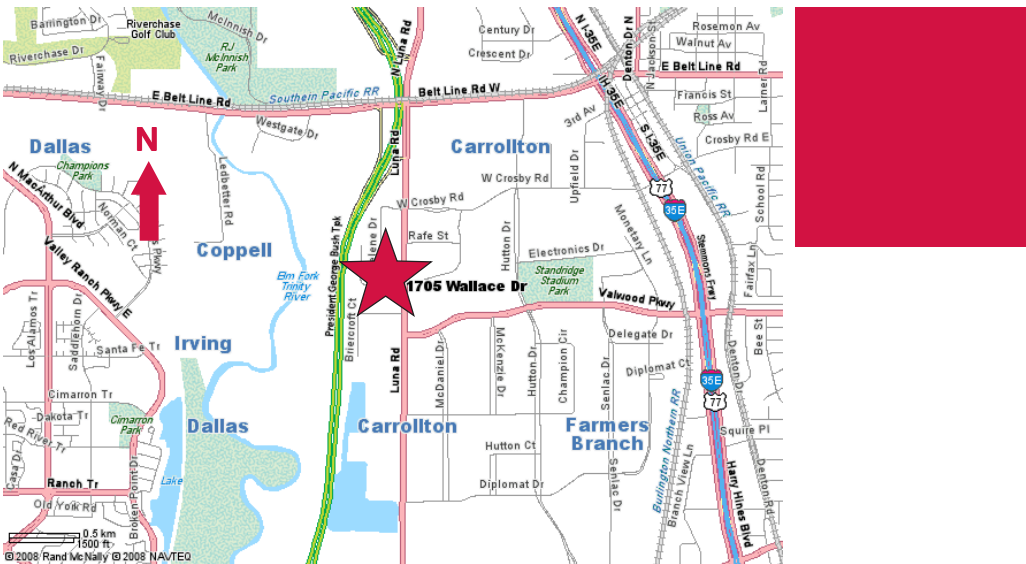


Suite 104 / 17,325 SF

- ± 800 SF Office
- 3 Dock High Doors (All With Levelers)
- ± 17 Car Parks
- ± 24' Clear Height
- 41'3" x 52'6" Column Spacing
- ± 90' Truck Court Depth
- ESFR Sprinkler System
- Front Load
- Easy Access to I-635, I-35E & President George Bush Turnpike

Suite 112 / 17,325 SF

- ± 2,440 SF Office
- 3 Dock High Doors
- ± 16 Car Parks
- ± 24' Clear Height
- 41'3" x 52'6" Column Spacing
- ± 90' Truck Court Depth
- ESFR Sprinkler System
- Front Load
- Easy Access to I-635, I-35E & President George Bush Turnpike



Owned & Managed By:



INDUSTRIAL PROPERTIES
CORPORATION

contact information:

Mark Miller, SIOR

NAI Robert Lynn

direct 214 256 7119

email mmiller@robertlynn.com

Chad Albert

NAI Robert Lynn

direct 214 256 7135

email calbert@robertlynn.com

Tyson Erwin

NAI Robert Lynn

direct 214 256 7127

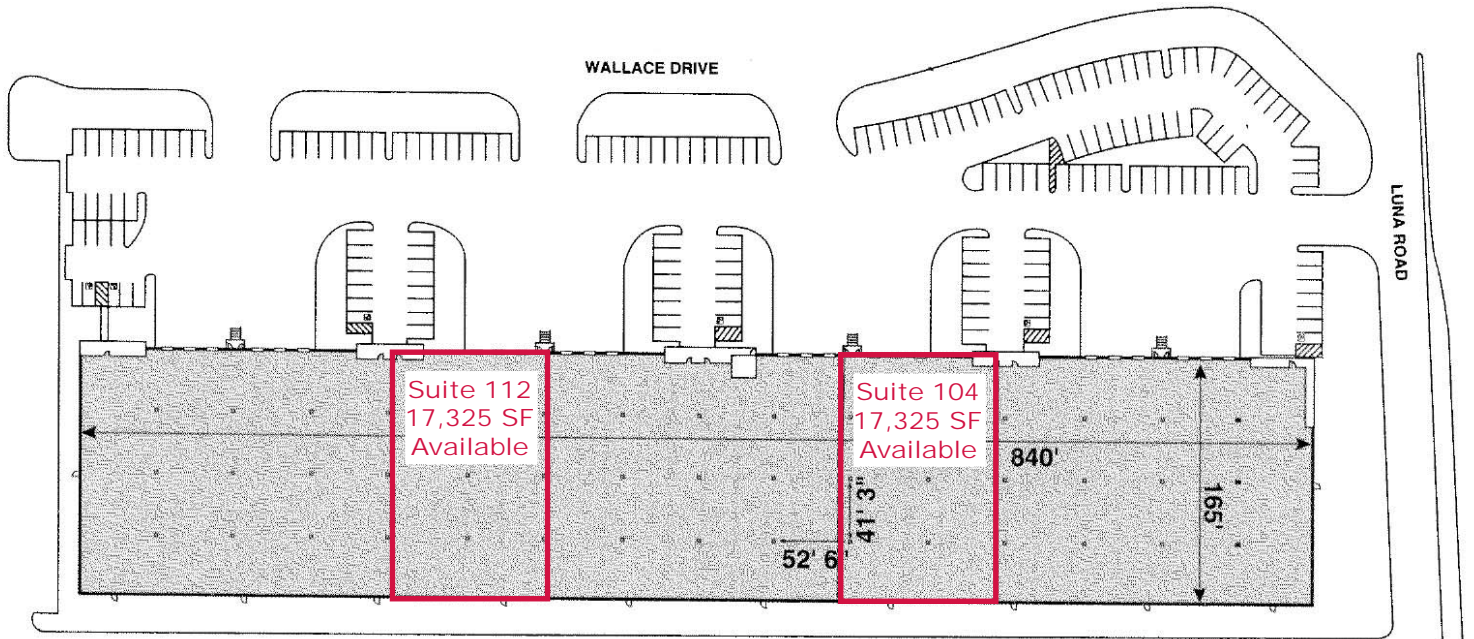
email terwin@robertlynn.com

NAI Robert Lynn

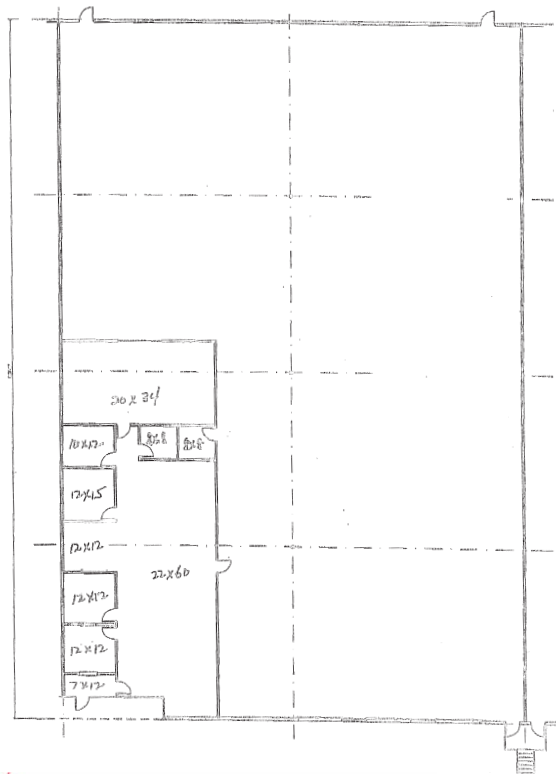
Commercial Real Estate Services, Worldwide.

For Lease

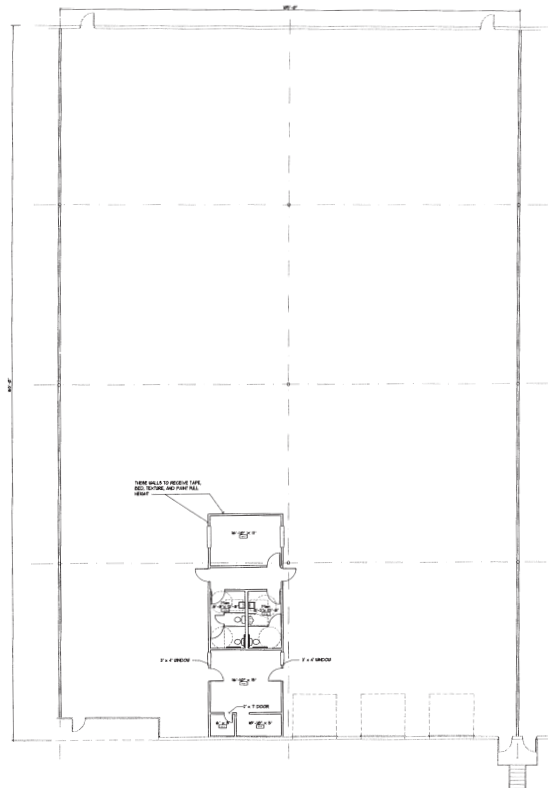
1705 Wallace Drive, Suites 104 & 112
Carrollton, Texas
17,325 Sq. Ft. / 17,325 Sq. Ft.



Suite 112



Suite 104



NAI Robert Lynn
Commercial Real Estate Services, Worldwide.

The information contained herein has been given to us by the owner of the property or other sources we deem reliable. We have no reason to doubt its accuracy, but we do not guarantee it. All information should be verified prior to purchase or lease.

Individual Memberships
SIOR SOCIETY OF
INDUSTRIAL AND
OFFICE REALTORS®