

# For Lease

17000 N. Dallas Parkway

Dallas, Texas

742 - 5,598 Square Feet Available



- Freestanding, Two-Story Office Building
- Great North Dallas Location
- 3.5:1000 Covered Parking
- Close Proximity to Various Restaurants/Retail
- Seven Suites Available:
  - Suite 125: 4,003 SF (Expandable to 5,598 SF)
  - Suite 219: 1,924 SF
  - Suite 102: 1,543 SF
  - Suite 123: 1,355 SF (Expandable to 5,598 SF)
  - Suite 229: 1,279 SF
  - Suite 221: 1,045 SF
  - Suite 126: 742 SF

#### contact information:

Dan Jardine  
direct 214 256 7126  
fax 214 256 7101  
email [djardine@robertlynn.com](mailto:djardine@robertlynn.com)

John Lancaster  
direct 214 256 7162  
fax 214 256 7101  
email [jlancaster@robertlynn.com](mailto:jlancaster@robertlynn.com)



Commercial Real Estate Services, Worldwide.

# For Lease

17000 N. Dallas Parkway

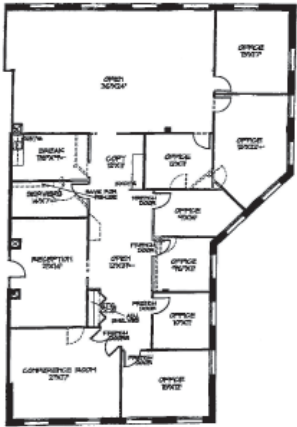
Dallas, Texas

742 - 5,598 Square Feet Available

## Suite 125

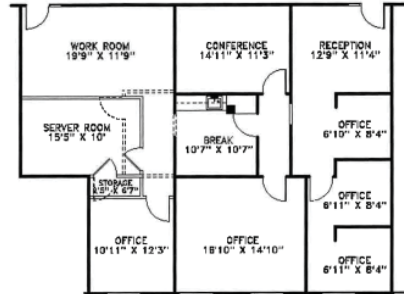
4,003 Square Feet

Contiguous With Suite 123



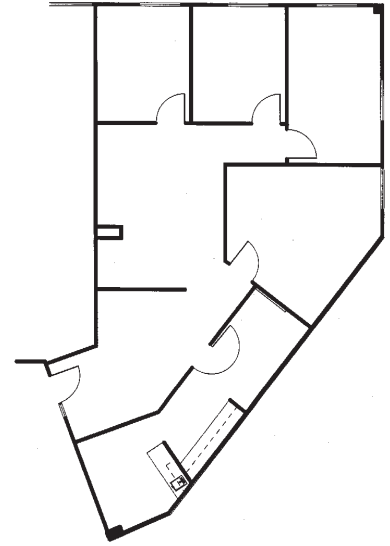
## Suite 219

1,924 Square Feet



## Suite 102

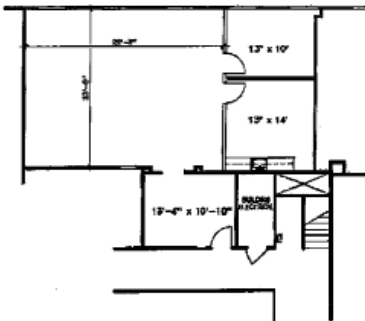
1,543 Square Feet



## Suite 123

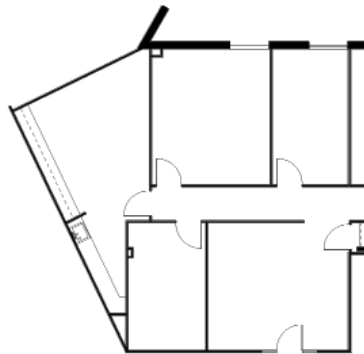
1,355 Square Feet

Contiguous With Suite 125



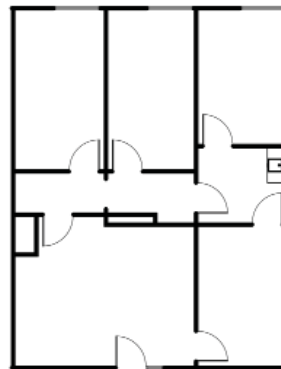
## Suite 229

1,279 Square Feet



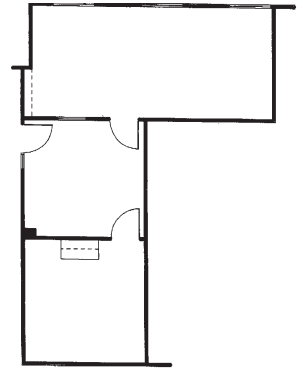
## Suite 221

1,045 Square Feet



## Suite 126

742 Square Feet



**NAI** Robert Lynn

Commercial Real Estate Services, Worldwide.

The information contained herein has been given to us by the owner of the property or other sources we deem reliable. We have no reason to doubt its accuracy, but we do not guarantee it. All information should be verified prior to purchase or lease.

Individual Memberships  
SOCIETY OF  
INDUSTRIAL AND  
OFFICE REALTORS®