

For Lease

1600-1610 Corporate Court
Irving, Texas (Las Colinas)
4,525 - 16,511 Square Feet Available



1600 Corporate Court #140

- 4,525 Square Feet
- 100% Office
- Sprinklered
- Expandable to 16,511 SF
- \$10.00/SF IG

1600 Corporate Court #150

- 11,986 Square Feet
- Office/Tech Space
- All Air-Conditioned (Large Open Area)
- Sprinklered
- Possible Call Center
- \$9.50/SF IG



NAI Robert Lynn

Commercial Real Estate Services, Worldwide.

contact information:

Jim Svidron

NAI Robert Lynn

direct 214 256 7172

email jsvidron@robertlynn.com

For Lease

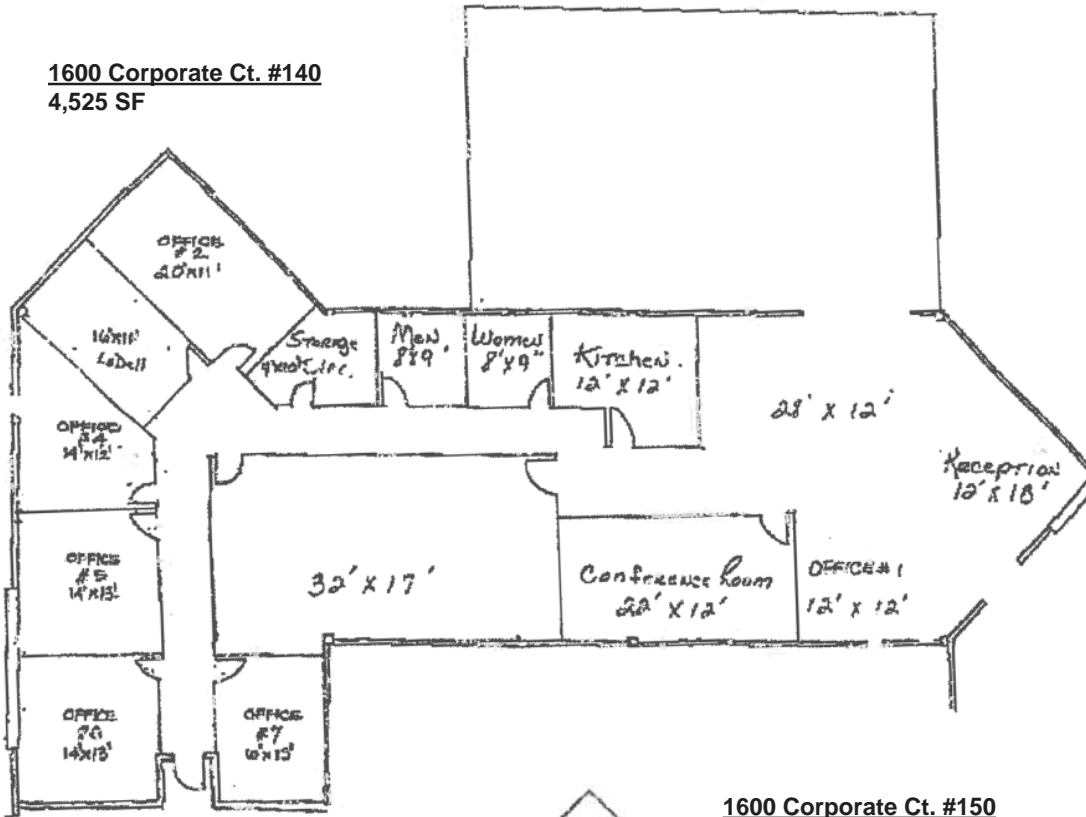
1600-1610 Corporate Court

Irving, Texas (Las Colinas)

4,525 - 16,511 Square Feet Available

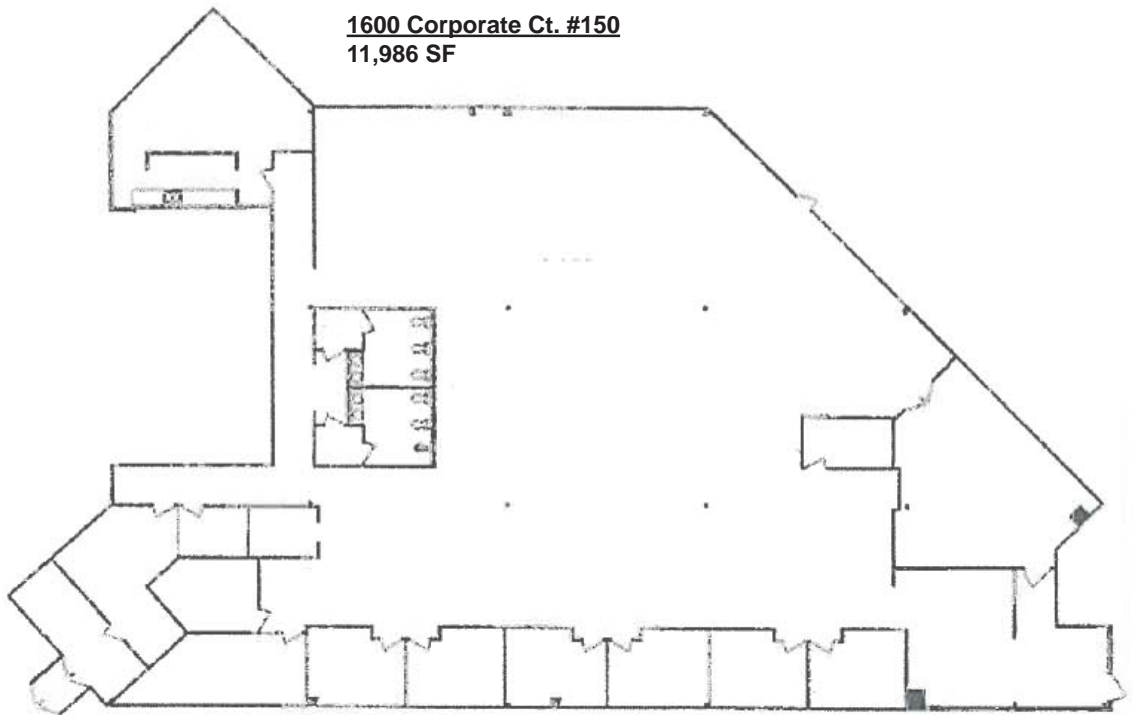
1600 Corporate Ct. #140

4,525 SF



1600 Corporate Ct. #150

11,986 SF



NAI Robert Lynn

Commercial Real Estate Services, Worldwide.

The information contained herein has been given to us by the owner of the property or other sources we deem reliable. We have no reason to doubt its accuracy, but we do not guarantee it. All information should be verified prior to purchase or lease.

Individual Memberships
SOCIETY OF
INDUSTRIAL AND
OFFICE REALTORS®