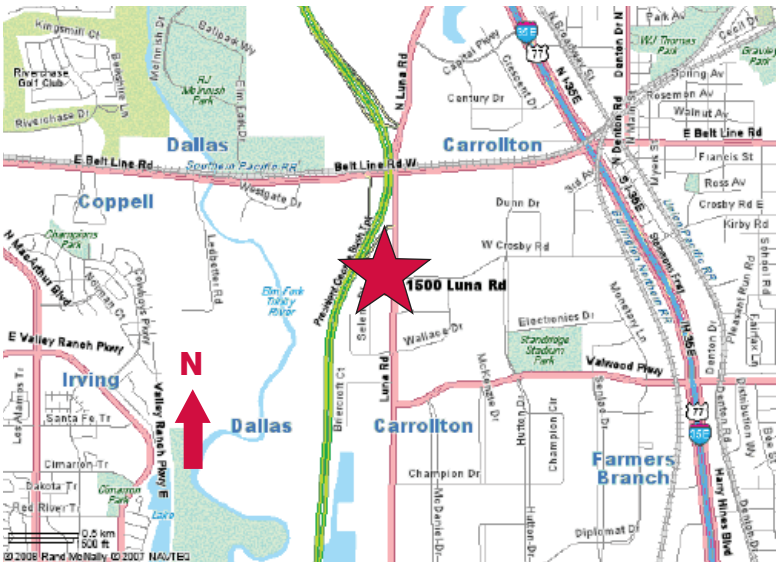


# For Lease

1500 Luna Road, Suite 108  
Carrollton, Texas  
26,170 Square Feet Available



- ± 3,000 SF Office Area
- ± 24' Clear Height
- 5 Dock High Doors
- 1 Ramped Door
- ESFR Sprinkler System
- Front Load
- 21 Car Parks
- Frontage on Luna Road
- Great Distribution Space



Owned & Managed By:



**INDUSTRIAL PROPERTIES**  
CORPORATION

**contact information:**

Mark Miller, SIOR  
NAI Robert Lynn  
direct 214 256 7119  
email mmiller@robertlynn.com

Chad Albert  
NAI Robert Lynn  
direct 214 256 7135  
email calbert@robertlynn.com

Tyson Erwin  
NAI Robert Lynn  
direct 214 256 7127  
email terwin@robertlynn.com



Commercial Real Estate Services, Worldwide.

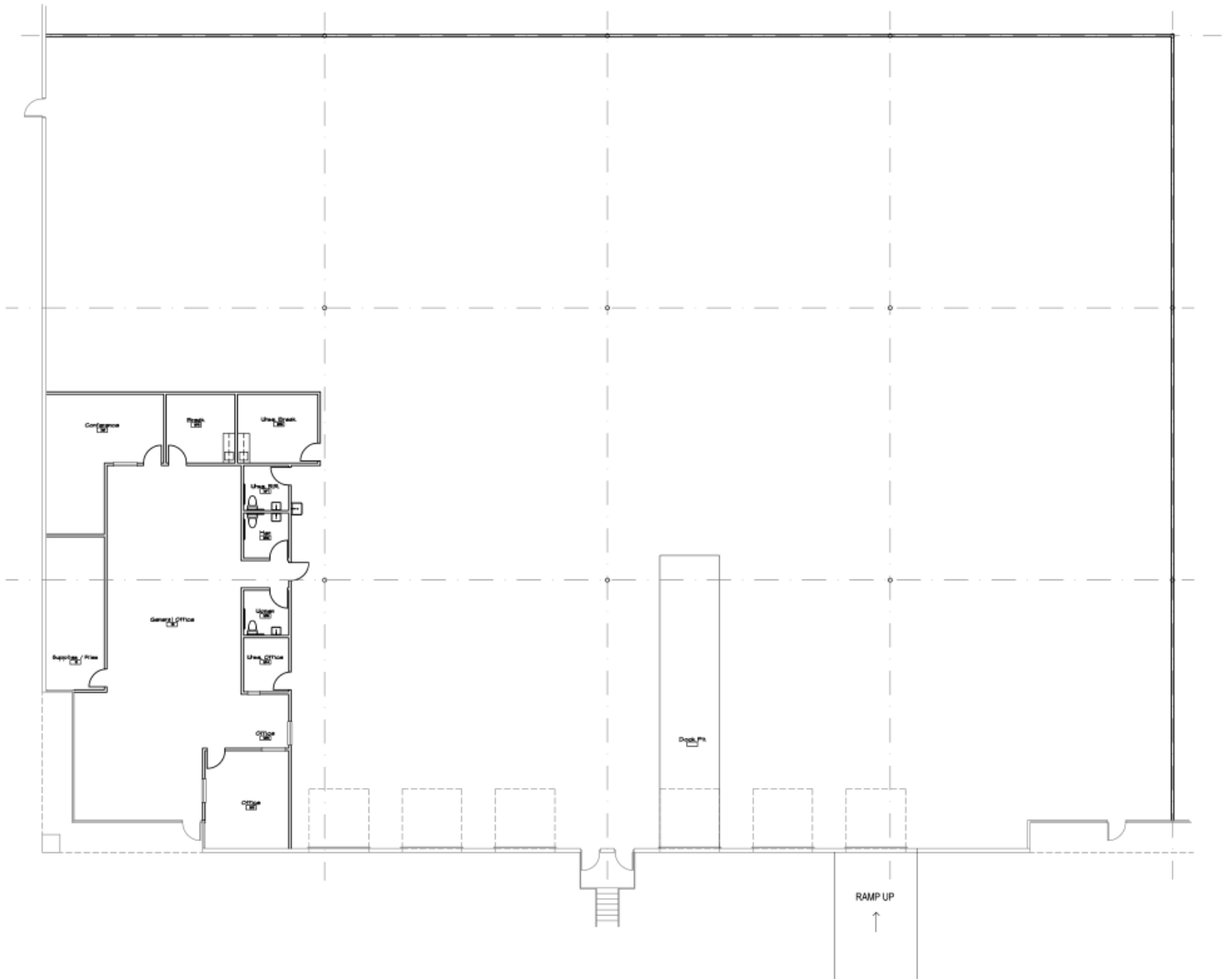
4851 LBJ Freeway Suite 1000 Dallas Texas 75244 Tel 214 256 7100 Fax 214 256 7101 www.robertlynn.com

# For Lease

1500 Luna Road, Suite 108

Carrollton, Texas

26,170 Square Feet Available



**NAI** Robert Lynn

Commercial Real Estate Services, Worldwide.

The information contained herein has been given to us by the owner of the property or other sources we deem reliable. We have no reason to doubt its accuracy, but we do not guarantee it. All information should be verified prior to purchase or lease.

Individual Memberships  
SOCIETY OF  
INDUSTRIAL AND  
OFFICE REALTORS®