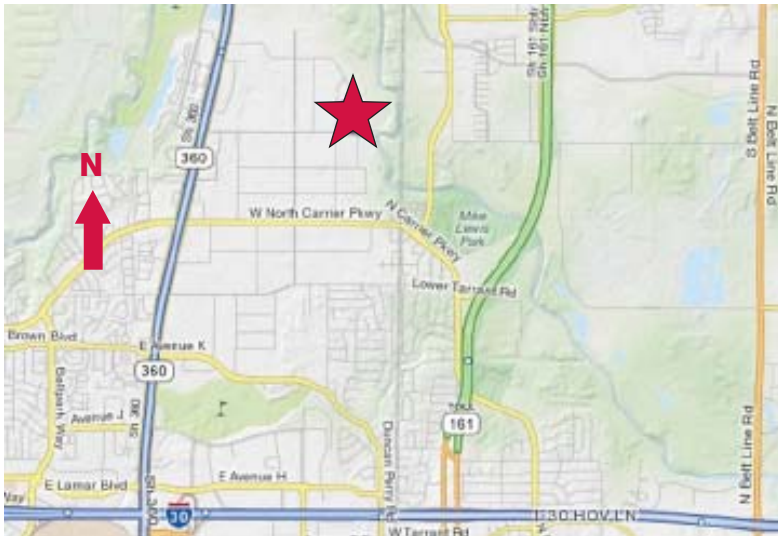


For Sublease

1470 Post & Paddock Road
Grand Prairie, Texas
7,780 Square Feet



- ± 2,900 SF Office
- ± 14.5' Clear Height
- 1 Grade Level Door
- 1 Dock High Position (With Leveler)
- All Air-Conditioned
- ± 16 Car Parks
- Sublease Through September 30, 2013



NAI Robert Lynn

Commercial Real Estate Services, Worldwide.



4851 LBJ Freeway Suite 1000 Dallas Texas 75244 Tel 214 256 7100 www.robertlynn.com

The information contained herein has been given to us by the owner of the property or other sources we deem reliable. We have no reason to doubt its accuracy, but we do not guarantee it. All information should be verified prior to purchase or lease.

contact information:

Michael A. Stanzel, SIOR

NAI Robert Lynn

direct 214 256 7122

fax 214 256 7101

email mstanzel@robertlynn.com