

# For Lease

1210 W. Scyene Road

Mesquite, Texas

5,200 - 11,000 Square Feet Available



■ ± 16' Eave Height

■ Insulated

### Suite A

■ ± 11,000 SF Available

■ ± 1,100 SF Office

■ 1 Grade Level Door

(Another Can Be Added)

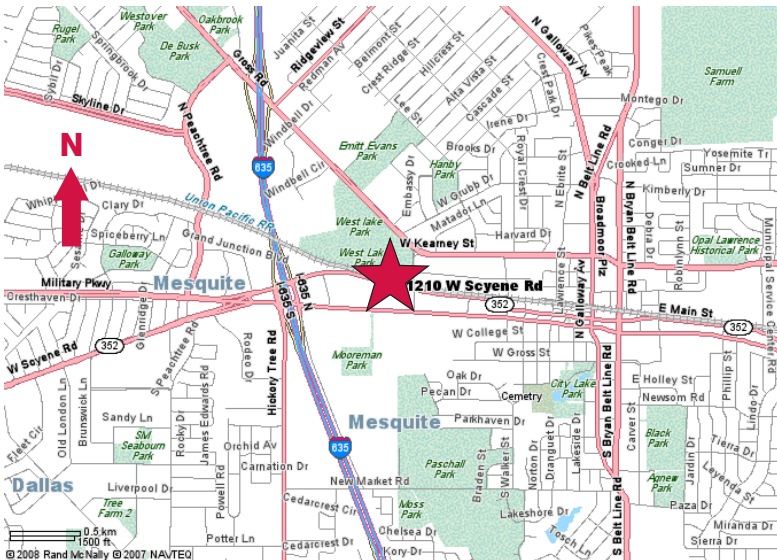
### Suite D

■ ± 5,200 SF Available

■ ± 1,250 SF Office

■ 2 Grade Level Doors

■ ± 3,000 SF Fenced Outside Storage



Located approximately 1/2 mile to LBJ Freeway (complete on/off ramps)

© 2009 Tele Atlas

contact information:

**Bob Spletter**

NAI Robert Lynn

direct 214 256 7117

fax 214 256 7101

email [bspletter@robertlynn.com](mailto:bspletter@robertlynn.com)

**Zach Spletter**

NAI Robert Lynn

direct 214 256 7121

fax 214 256 7101

email [zspletter@robertlynn.com](mailto:zspletter@robertlynn.com)

**NAI Robert Lynn**

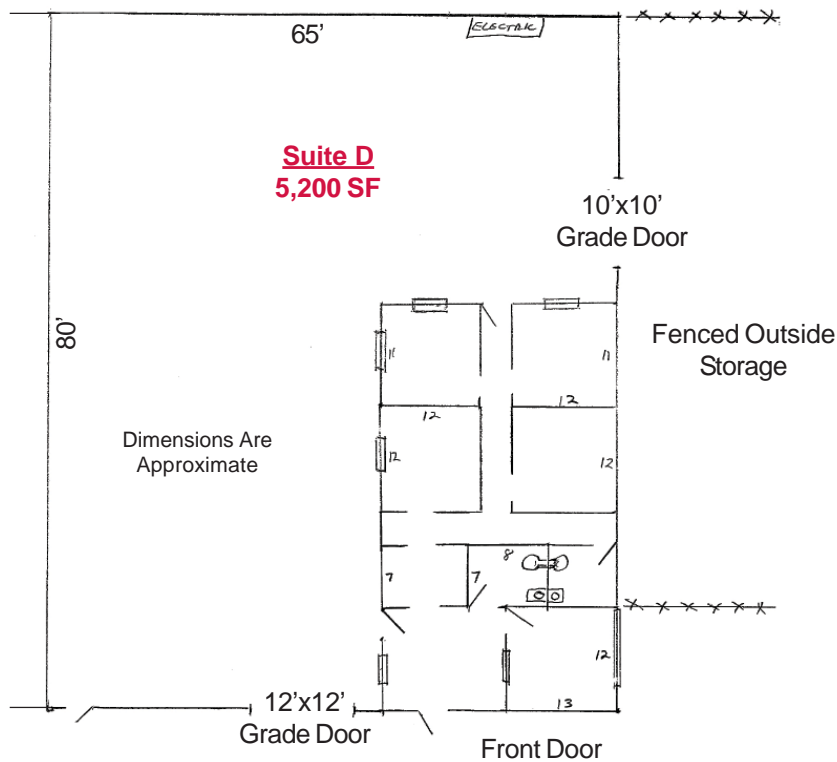
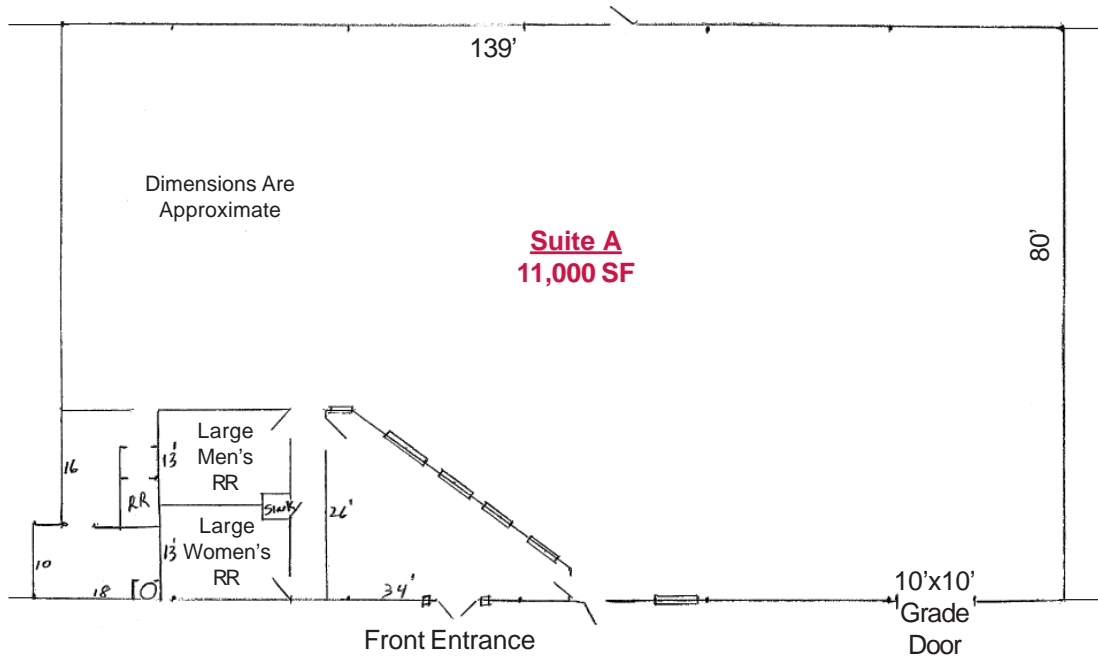
Commercial Real Estate Services, Worldwide.

# For Lease

1210 W. Scyene Road

Mesquite, Texas

5,200 - 11,000 Square Feet Available



**NAI Robert Lynn**

Commercial Real Estate Services, Worldwide.

The information contained herein has been given to us by the owner of the property or other sources we deem reliable. We have no reason to doubt its accuracy, but we do not guarantee it. All information should be verified prior to purchase or lease.

Individual Memberships  
SOCIETY OF  
INDUSTRIAL AND  
OFFICE REALTORS®