

For Lease

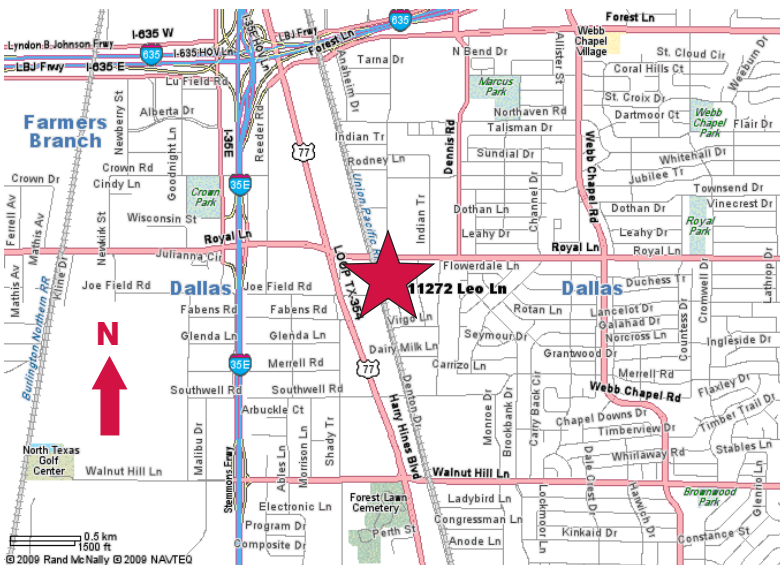
11272 Leo Lane

Dallas, Texas

24,800 Square Feet



- ± 3,400 SF Office
- ± 20' Clear Height
- 2 Dock High Doors
- 1 Ramped Door
- Fire Sprinklered
- Located ± 1.5 Miles From I-635/I-35E Interchange
- One Block From New Dart Rail Station



NAI Robert Lynn

Commercial Real Estate Services, Worldwide.

4851 LBJ Freeway Suite 1000 Dallas Texas 75244 Tel 214 256 7100 www.robertlynn.com

contact information:

Bob Spletter

NAI Robert Lynn

direct 214 256 7117

fax 214 256 7101

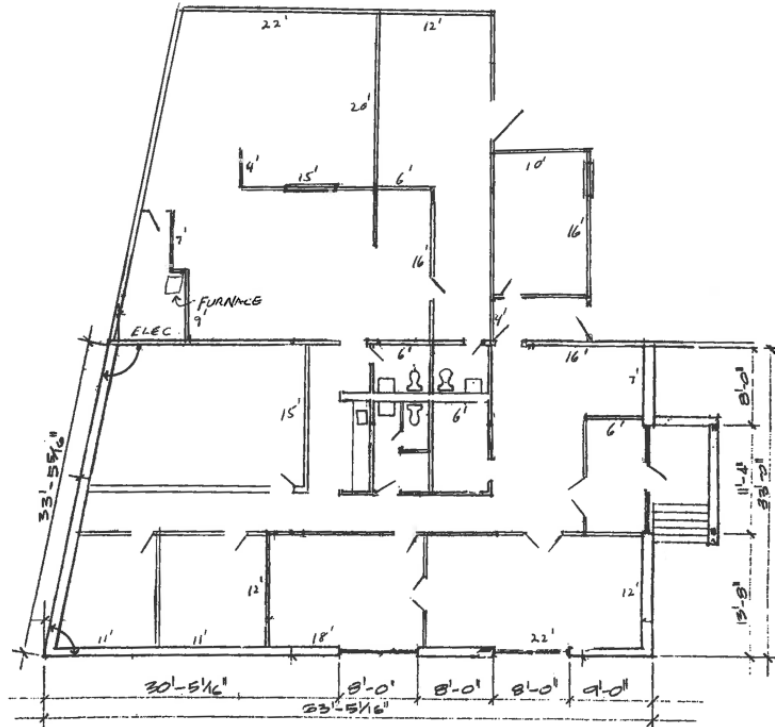
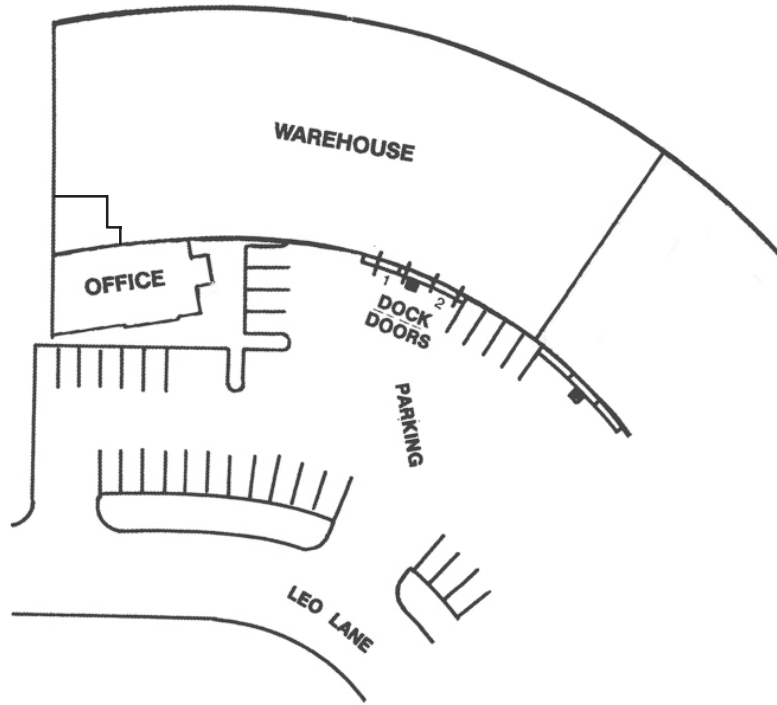
email bspletter@robertlynn.com

For Lease

11272 Leo Lane

Dallas, Texas

24,800 Square Feet



NAI Robert Lynn

Commercial Real Estate Services, Worldwide.

The information contained herein has been given to us by the owner of the property or other sources we deem reliable. We have no reason to doubt its accuracy, but we do not guarantee it. All information should be verified prior to purchase or lease.

Individual Memberships
SOCIETY OF
INDUSTRIAL AND
OFFICE REALTORS®