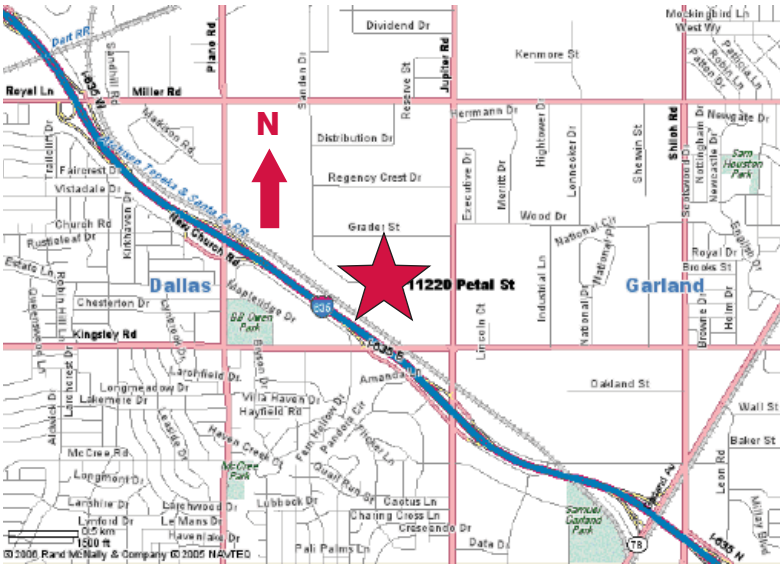


# For Lease

11220B Petal Street  
Dallas, Texas  
35,378 Square Feet



- ± 1,494 SF Office
- ± 23' Clear Height
- 2 Dock Doors With Levelers
- 1 Ramped Door
- High Density Sprinkler
- Heavy Power
- Rail Served
- Potential Outside Storage
- Previously Approved For Tire Storage

Owned by:



**NAI** Robert Lynn

Commercial Real Estate Services, Worldwide.

contact information:

Stephen Cooper, SIOR

NAI Robert Lynn

direct 214 256 7160

fax 214 256 7101

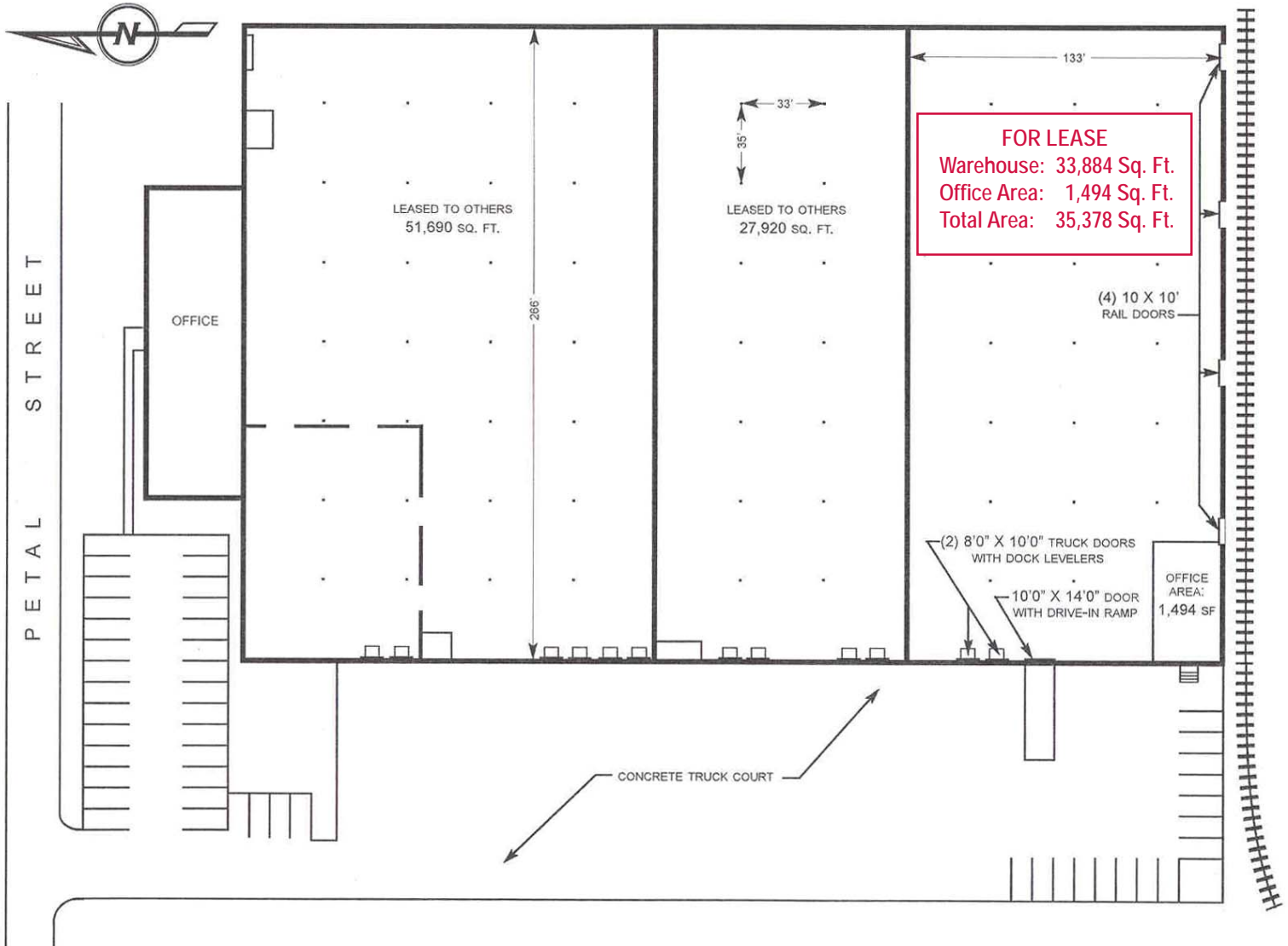
email [scooper@robertlynn.com](mailto:scooper@robertlynn.com)

# For Lease

11220B Petal Street

Dallas, Texas

35,378 Square Feet



**NAI** Robert Lynn

Commercial Real Estate Services, Worldwide.

The information contained herein has been given to us by the owner of the property or other sources we deem reliable. We have no reason to doubt its accuracy, but we do not guarantee it. All information should be verified prior to purchase or lease.

Individual Memberships  
**SIOR** SOCIETY OF  
INDUSTRIAL AND  
OFFICE REALTORS®