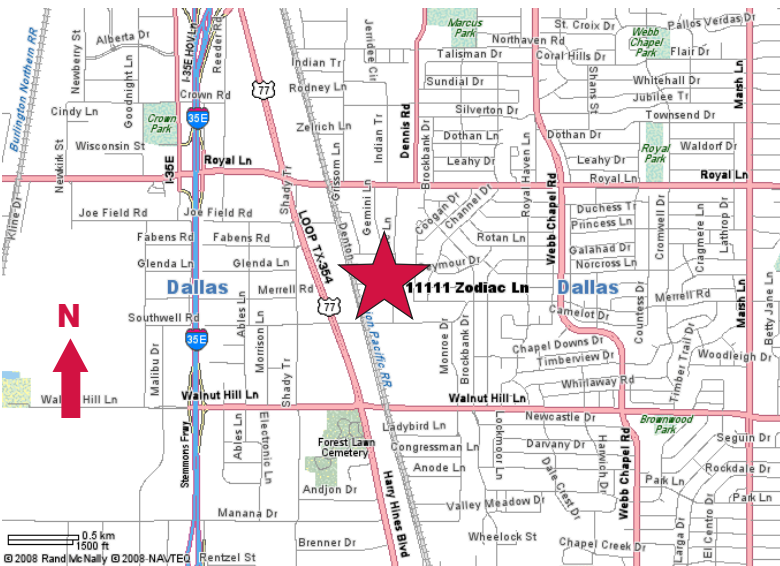


For Lease

11111 Zodiac Lane & 2859 Dairy Milk Lane
Dallas, Texas
28,768 Square Feet (Divisible)



11111 Zodiac Lane

- 12,100 Square Feet
- ± 4,291 SF Office
- ± 22' Clear Height
- 2 Dock High
- Front Load
- Sprinklered

2859 Dairy Milk Lane

- 16,668 Square Feet
- ± 5,192 SF Office
- ± 22' Clear Height
- 6 Dock High
- Front Load
- Sprinklered

Owned & Managed By:



INDUSTRIAL PROPERTIES
CORPORATION

contact information:

Adam Curran

NAI Robert Lynn

direct 214 256 7163

email acurran@robertlynn.com

Matt Elliott

NAI Robert Lynn

direct 214 256 7161

email melliott@robertlynn.com

NAI Robert Lynn

Commercial Real Estate Services, Worldwide.

For Lease

11111 Zodiac Ln. & 2859 Dairy Milk Ln.
Dallas, Texas
28,768 Square Feet (Divisible)

