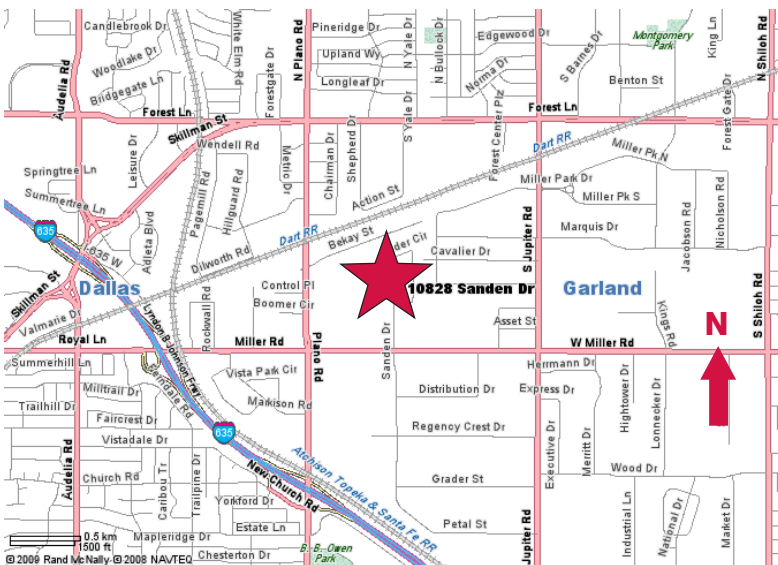


For Lease

10828 Sanden Drive
Dallas, Texas
8,000 Square Feet



- ± 2,000 SF Office
- ± 28' Clear Height
- 1 Dock High Door (Ramped)
- Sprinklered
- Frontage on Sanden Drive



NAI Robert Lynn

Commercial Real Estate Services, Worldwide.

4851 LBJ Freeway Suite 1000 Dallas Texas 75244 Tel 214 256 7100 www.robertlynn.com

contact information:

Stephen Cooper, SIOR

NAI Robert Lynn

direct 214 256 7160

fax 214 256 7101

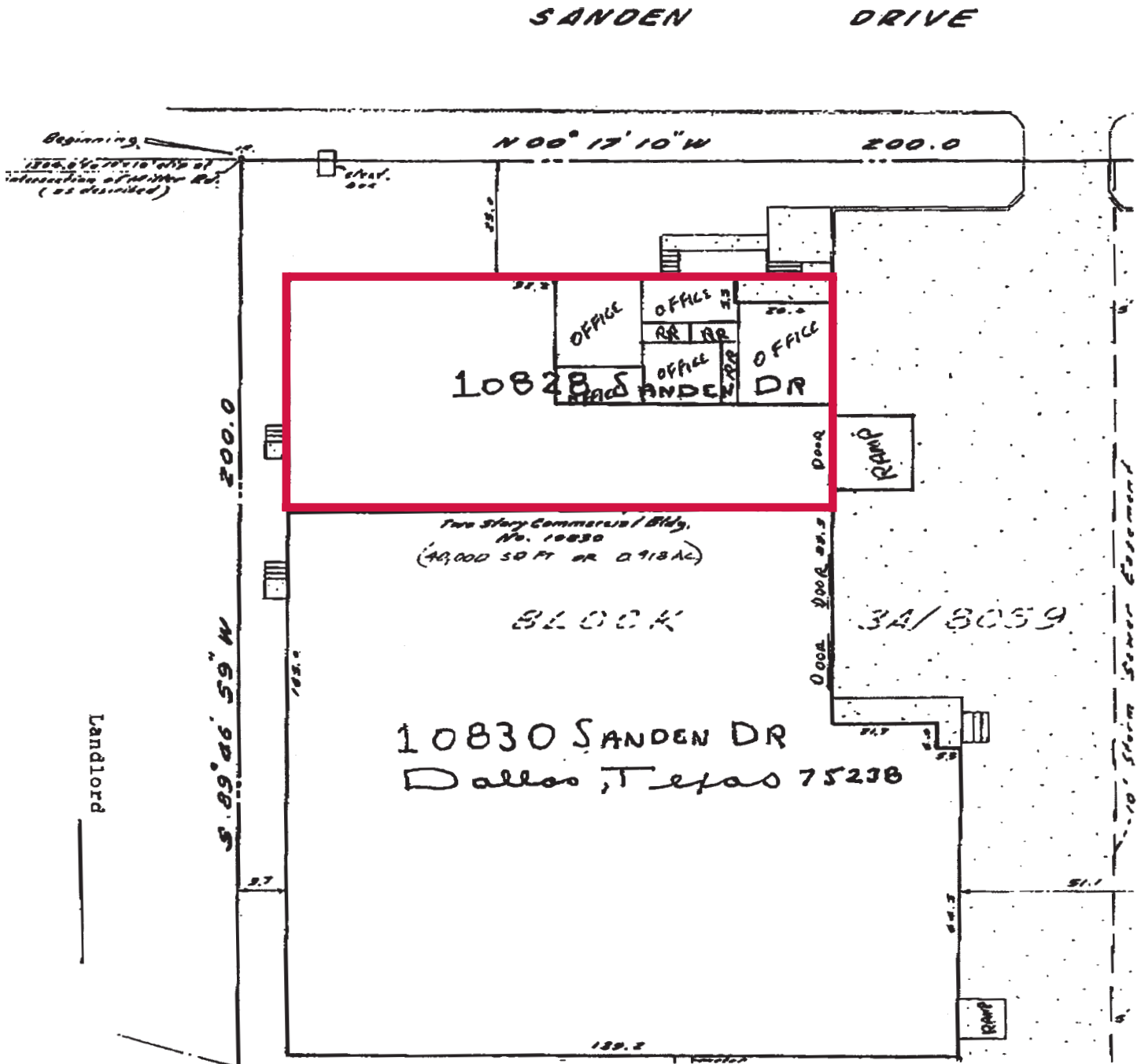
email scooper@robertlynn.com

For Lease

10828 Sanden Drive

Dallas, Texas

8,000 Square Feet



NAI Robert Lynn

Commercial Real Estate Services, Worldwide.

The information contained herein has been given to us by the owner of the property or other sources we deem reliable. We have no reason to doubt its accuracy, but we do not guarantee it. All information should be verified prior to purchase or lease.



Individual Memberships
SOCIETY OF
INDUSTRIAL AND
OFFICE REALTORS®