

For Lease

1001 Jarvis Road
Saginaw, Texas
21,600 Square Feet



- ± 4,834 SF Two-Story Offices
- ± 14'-16' Clear Height
- 7 Grade Level Doors
- 1 Dock Platform
- Very Heavy Power
- Heavy Gas Accessibility
- Fenced Outside Storage
- Situated on ± 2.89 Acres of Land



contact information:

Michael Newsome

NAI Robert Lynn

direct 817 872 3903

mobile 214 770 5070

email mnewsome@robertlynn.com

Todd Hubbard, SIOR

NAI Robert Lynn

direct 817 872 3901

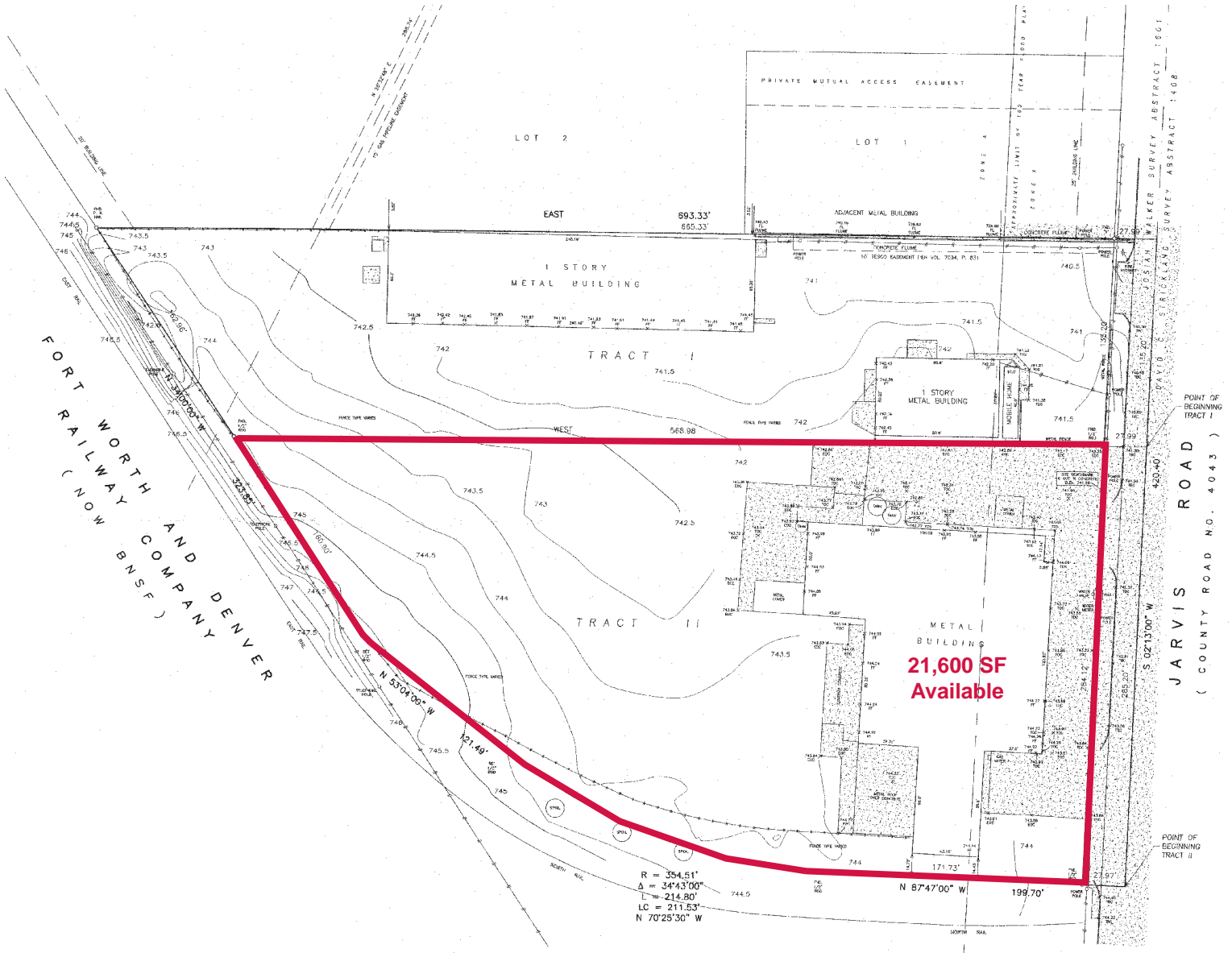
mobile 817 501 2012

email thubbard@robertlynn.com

NAI Robert Lynn

Commercial Real Estate Services, Worldwide.

For Lease
 1001 Jarvis Road
 Saginaw, Texas
 21,600 Square Feet



NAI Robert Lynn

Commercial Real Estate Services, Worldwide.

The information contained herein has been given to us by the owner of the property or other sources we deem reliable. We have no reason to doubt its accuracy, but we do not guarantee it. All information should be verified prior to purchase or lease.

Individual Memberships
 SOCIETY OF
 INDUSTRIAL AND
 OFFICE REALTORS®